



At the University of Oregon

The Oregon Sage

Monthly newsletter from the Osher Lifelong Learning Institute at the University of Oregon

Volume 2, Number 2

February 2012

Osher Lifelong Learning Institute • Academic Extension • 1277 University of Oregon, Eugene, OR 97403-1277
800-824-2714 • academicextension@uoregon.edu • http://osher.uoregon.edu

INSIDE

Central Oregon

Editor's Note	2
Upcoming Presentations	2
Schedule	4
Learning Circle	6

Eugene/Springfield

Editor's Note	7
Upcoming Presentations	7
Schedule	8
Learning Circle	11

Portland

Editor's Note	12
Upcoming Presentations	12
Schedule	14
Learning Circle	16



UNIVERSITY OF OREGON

Central Oregon: Bees 101 with Naturalist Jim Anderson

Monday, February 6, 2:00–4:00 p.m.

Join OLLI at the Environmental Center on 16 NW Kansas Ave, Bend, for an informed, lively discussion of *Apis mellifera* featuring Oregon's popular and resident naturalist, **Jim Anderson**. Anderson has a compelling and extensive history as a writer, teacher, and protector of species. He has appeared many times in the *Oregon Field Guide* programs, started the nature programs at Sunriver, and been a forty-year student of raptors in Central Oregon. His book, *Tales from a Northwest Naturalist* describes life as an active, engaged observer of wildlife.

continued on page 2

Eugene/Springfield: Armchair Traveler: Morocco

Thursday, February 2, 1:30–3:30 p.m.

In February 2011, **Wende Hitchcock** began her tour of Morocco, and now she will share her pictures and memories of Rabat, the old walled city of Fez, a night spent in a tent in the Saharan desert, scenes of Marrakech, a city of over a million people, and many places and sites in between. Visit a Moroccan Saturday market and see how mosaic tiles are made. We don't need Bing Crosby and Bob Hope to tell us that it was a fabulous tour, and Wende will include us in a detailed armchair itinerary.

Armchair Traveler sessions are scheduled throughout the year. Usually an hour in duration, these presentations *continued on page 7*

Portland: Discover Lifelong Learning Day—Open House

Saturday, February 4, 10:00 a.m.–3:30 p.m.

This Open House represents an opportunity to showcase OLLI-UO in Portland, its lectures, discussion groups, workshops, and members. Four sessions are planned for the day:

- Chinese Culture, a lecture by Professor Emeritus and OLLI member Phil Silverman
- The Rise of Humans: Great Scientific Debates, a DVD discussion group facilitated by Mike Ellis
- Houses of Oregon, a lecture by Professor of Architecture Thomas Hubka

continued on page 12

Central Oregon



Editor's Note: Central Oregon

The New Year holds many new things for OLLI-UO in Central Oregon, the most exciting of which is our new facility. With the completion of the new

Duck Store and its move to new quarters on Third Street, the finishing touches will be put on the classroom space that OLLI will use. Watch for your invitation to a members' open house to celebrate the end of our nomadic wanderings and the start of using our permanent facility.

In its first meeting, OLLI-CO's governing council elected its officers for the coming year. Leading the council is President Burt Litman, Vice President Mike McAllister, Secretary Carolyn Hammond, and Treasurer Ed Lee. We've got a great group on council, many of whom are sitting on multiple committees.

And many thanks to Russ Hopper who served as council president for two years and continues to serve on council,

membership and program committees.

There are new programs beginning—our new Wednesday morning history course, American Mind, begins this month. In March we'll return to art programming on Tuesday afternoons at 2:00 p.m. with World's Greatest Paintings, a TC DVD course guided by professor William Kloss and facilitated by Burt Litman. And we are already looking ahead to a summer documentary series.

By the time you're reading this edition, the program committee will have completed calls to members to take its program survey. We'll report the results to the membership when they're compiled and use those results as we continue our curriculum planning.

Winter will hopefully be behind us soon, and the start of OLLI field trips will be here.

There's much to look forward to for OLLI this year—don't miss out.

Jeanne Freeman, Editor

continued from page 1

Bee pollination is responsible for \$15 billion in added crop value, particularly for specialty crops such as almonds and other nuts, berries, fruits and vegetables (Oregon crops). About one mouthful in three in the diet directly or indirectly benefits from honeybee pollination. In California the almond crop alone uses 1.3 million colonies of bees, about half of all honeybees in the United States.

Beginning in 2006 some beekeepers began losing 30-90 percent of their hives from a currently unrecognizable cause. It has been termed, "Colony Collapse Disorder" with a low number of adult bees present but with a live queen and no dead honeybees in the hive. Often there is still honey in the hive.

With Bees 101, we hope to answer Isaac Watt's eighteenth Century question:

*"How doth the little busy bee
Improve each shining hour
And gather honey all the day
From every opening flower!"*

Armchair Traveler: Hiking and History in the Dolomite Mountains

Thursday, February 9, 2:00–4:00 p.m. Located between Italy and Austria is an incredible area of the Alps known as the Dolomites. These spectacular mountains provide wonderful hiking opportunities in the summer months as well as an opportunity to view awesome battle sites of World War I.

In the summer of 2011, OLLI member **Larry Weinberg** traveled to the Dolomites with the Seattle Mountaineers and spent time hiking the beautiful mountain valleys and

ridges of the Val Gardena, the Dobbiaco region and the Seiser Alm area.

During World War I this incredibly beautiful area was the scene of fierce fighting, and thousands lost their lives where today we hike for the sheer joy of being in the mountains.

Larry Weinberg, a retired Boeing Associate Technical Fellow in the area of environmental management, holds a PhD in mathematics, as well as a JD in law. In Bend, Larry teaches math at COCC, volunteers with several non-profit organizations, and serves on the board of directors for the Deschutes Land Trust.

Location: Brooks Room, Deschutes Public Library, Wall Street, Bend

Central Oregon

Classic Film Discussion Group 2012

Fridays, February 10 and 24,
10:00 a.m.–noon

We have chosen films that exemplify certain genres of film and should provoke good discussions. Many of these films are hidden treasures and **Roger Aikin**, emeritus professor of art history and film at Creighton University, guarantees that they are worth seeing. All films will be shown at OLLI at 10:00 a.m. on the Thursday before the 10:00 a.m. Friday discussions.

- **February 10**—*Visions of Light: The Art of Cinematography* (1992, ninety-two minutes) shows dozens of famous scenes from classic films going back to the silent era, and discusses film-making from the cameraman's point of view. (Film showing February 9.)
- **February 24**—*Hoosiers* (1986, David Anspaugh, 115 minutes) will give us an opportunity to talk about sports movies, their clichés, and fathers and sons. (Film showing February 23.)
Location: Shevlin-Hixon

Topics in Physics: History of Lasers

Tuesday, February 14,
10:00 a.m.–noon

Throughout his career, OLLI member **Jim Hammond** worked with lasers. He will share that knowledge with us in the second session of Topics in Physics.

Applications of lasers: We will look at the current state of development in the production of lasers and applications that use modern lasers and their advanced capabilities in many practical and exotic endeavors.

These applications include medical uses, precise measurements, as artificial stars for astronomy, remote sensing of the environment and inertial navigation. Join Hammond and OLLI for this exciting new course.

Location: Shevlin-Hixon

Book Discussion Group

The Believing Brain, Michael Shermer
Tuesdays, February 7 and 21,
10:00–11:45 a.m. (See January Newsletter for summary.)

Location: Dudley's Used
Book Shop

“Nearly six hundred years ago, a cannily alert man in his late thirties took a very old manuscript off a library shelf, saw with excitement what he had discovered, and ordered that it be copied. That book was the last surviving manuscript of an ancient Roman philosophical epic, *On the Nature of Things*, by Lucretius—a beautiful poem of the most dangerous ideas: that the universe functioned without the aid of gods, that religious fear was damaging to human life, and that matter was made up of very small particles in eternal motion, colliding and

Nearly six hundred years ago, a cannily alert man . . . took a very old manuscript off a library shelf, saw with excitement what he had discovered, and ordered that it be copied. That book was the last surviving manuscript of an ancient Roman philosophical epic . . .

The Swerve: How the World Became Modern by Stephen Greenblatt

Tuesdays, March 6 and 20,
10:00–11:45 a.m.

“One of the world's most celebrated scholars, Stephen Greenblatt has crafted both an innovative work of history and a thrilling story of discovery, in which one manuscript, plucked from a thousand years of neglect, changed the course of human thought and made possible the world as we know it.

swerving in new directions.

“The copying and translation of this ancient book—the greatest discovery of the greatest book-hunter of his age—fueled the Renaissance, inspiring artists such as Botticelli and thinkers such as Giordano Bruno; shaped the thought of Galileo and Freud, Darwin and Einstein; and had a revolutionary influence on writers such as Montaigne and Shakespeare and even Thomas Jefferson” (from Amazon.com).

Central Oregon

1 Wednesday

10:00 a.m. The Rise and Fall of the British Empire [DVD study group] White Dominions, Britain After the Empire. Facilitator: Don Hartsough (S-H)

3 Friday

1:00 p.m. How the Earth Works [DVD study group] Creating Earth—Recipe for a Planet, The Rock Cycle—Matter in Motion. Facilitators: Russel Hopper and Bob Clautice (S-H)

6 Monday

10:00 a.m. Thinking Allowed II at Touchmark [discussion group] Topic TBA. Facilitator: Helen Vandervort (TMRL)

2:00 p.m. Bees 101 [lecture] Presenter: Jim Anderson, (Central Oregon Environmental Center)

7 Tuesday

10:00 a.m. Book Group [discussion group] *The Believing Brain* by Michael Shermer (DB)

Noon Round Table Luncheon at Tethrow Golf Club For reservations, contact Harlie Peterson, harliepete@hotmail.com or call the OLLI office at 541-617-4663.

2:00 p.m. Great American Music: Broadway Musicals [DVD study group] Rodgers and Hammerstein Era (1940s). Facilitator: Rod Charny (S-H)

8 Wednesday

10:00 a.m. Rise and Fall of the British Empire [DVD study group] Colonial and Postcolonial Literature. Facilitator: Don Hartsough (S-H)

9 Thursday

10:00 a.m. Classic Film Previews [film] *Visions of Light: The Art of Cinematography* (1992) Facilitator: Roger Aikin (S-H)

2:00 p.m. Armchair Traveler: Hiking and History in the Dolomite Mountains [lecture] Presenter: Larry Weinberg (Deschutes Public Library)

10 Friday

10:00 a.m. Classic Film Discussion [lecture/discussion] *Visions of Light: The Art of Cinematography*. Presenter: Roger Aikin (S-H)

1:00 p.m. How the Earth Works [DVD study group] Minerals—The Building Blocks of Rocks, The Building Mush of Rocks. Facilitators: Russel Hopper and Bob Clautice (S-H)

13 Monday

1:00 p.m. Thinking Allowed [discussion group] Facilitator: Ruth Burleigh (S-H)

3:00 p.m. Membership Outreach Committee Meeting Chair: Leslie Koc, 541-306-6083 (S-H)

14 Tuesday

10:00 a.m. Topics in Physics [lecture series, session two of six] Applications of Lasers. Presenter: Jim Hammond (S-H)

2:00 p.m. Great American Music: Broadway Musicals [DVD study group] Golden Age of Musical Theater (1950s). Facilitator: Rod Charny (S-H)

15 Wednesday

10:00 a.m. American Mind [DVD study group] The Intellectual Geography of America, The Technology of Puritan Thinking. Facilitator: TBD (S-H)

17 Friday

10:00 a.m. Governing Council Meeting President: Burt Litman (S-H)

1:00 p.m. How the Earth Works [DVD study group] Crystallization—The Rock Cycle Starts, Volcanoes—Lava and Ash. Facilitators: Russel Hopper and Bob Clautice (S-H)

20 Monday

10:00 a.m. Thinking Allowed II at Touchmark [discussion group] Topic TBA. Facilitator: Helen Vandervort (TMRL)

21 Tuesday

10:00 a.m. Book Group [discussion group] *The Believing Brain* by Michael Shermer (DB)

2:00 p.m. Great American Music: Broadway Musicals [DVD study group] Rock n Roll Reaches Broadway (1960s). Facilitator: Rod Charny (S-H)

22 Wednesday

10:00 a.m. American Mind [DVD study group] The Enlightenment in America, Jonathan Edwards and the Great Awakening. Facilitator: TBD (S-H).

23 Thursday

10:00 a.m. Classic Film Previews [film] *Hoosiers* (1986) Facilitator: Roger Aikin (S-H)

Central Oregon

24 Friday

10:00 a.m. Classic Film Discussion

[lecture/discussion] *Hoosiers*.
Presenter: Roger Aikin (S-H)

1:00 p.m. **Science Fridays** [discussion group] Facilitators: Russel Hopper and Bob Clautice (S-H)

27 Monday

1:00 p.m. **Thinking Allowed** [discussion group] Facilitator: Ruth Burleigh (S-H)

28 Tuesday

2:00 p.m. Program Committee Meeting

Chair: Helen Pruitt, 541-382-7827 (S-H)

29 Wednesday

10:00 a.m. **American Mind** [DVD study group] Colonial Colleges, Republican Fundamentals.
Facilitator: TBD (S-H)

Locations

Shevlin-Hixon (aka Brooks-Scanlon)
500 SW Bond Street, Suite 105, Bend

Bend Senior Center
1600 SE Reed Market Rd., Bend

Touchmark at Mount
Bachelor Village
19800 SW Touchmark Way, Bend

DesChutes Historical Museum
129 NW Idaho Ave., Bend

Dudley's Bookshop
135 NW Minnesota, Bend

Key

SH = Shevlin-Hixon Building
BSC = Bend Senior Center
DHM = DesChutes Historical Museum
TMA = Touchmark Auditorium
TMRL = Touchmark River Lodge
DB = Dudley's Bookshop
TBA = To Be Announced

Renewals

Mail renewals and membership applications to:

OLLI-UO Central Oregon
1277 University of Oregon
Eugene, OR 97403-1277

Or call the OLLI-UO office to renew,
800-824-2714

Questions?

Call 800-824-2714

Grid calendars available in the office or online at <http://osher.uoregon.edu>

OLLI Staff Contacts:

OLLI-UO Program Director:
Ruth Heller, 800-824-2714

OLLI Committee Contacts:

Council President:
Burt Litman, 541-504-5368

Program Chair:
Helen Pruitt, 541-382-7827

Activities and Travel:
Gerry and Bruce Sharp,
541-526-1399

Membership Outreach:
Leslie Koc, 541-306-6083

Coming in March

OLLI-CO Open House: Painting: Life in the Studio

Tuesday, March 13, 2:00–4:00 p.m.

Speaker: William Hoppe, artist and associate professor of art.

Mark your calendar so you don't miss this presentation.

Location: Bend Senior Center

World's Greatest Paintings

Tuesday, March 20, 2:00–4:00 p.m.

Join OLLI-CO for this Teaching Company DVD course guided by Professor William Kloss and facilitated by Burt Litman.

Central Oregon

Learning Circle

Monthly Schedule

Monday

10:00 a.m. Thinking Allowed II: first and third weeks at the River Lodge, Touchmark

1:00 p.m. Thinking Allowed: second and fourth weeks at the Shevlin-Hixon Executive Suites, 500 SW Bond Street, Bend.

Tuesday

10:00 a.m. Book Discussion
Group: first and third weeks at Dudley's Used Bookshop, 135 NW Minnesota.

Noon Round Table Luncheon: first week at Tetherow Golf Club.

2:00 p.m. Great American Music-Broadway Musicals: first, second and third weeks at the Shevlin-Hixon Executive Suites, 500 SW Bond Street, Bend.

Wednesday

10:00 a.m. Rise and Fall of the British Empire: February 1 and 8; American Mind: weekly, beginning February 15 at the Shevlin-Hixon Executive Suites, 500 SW Bond Street, Bend.

Friday

1:00 p.m. How the Earth Works: first, second and third weeks at the Shevlin-Hixon Executive Suites, 500 SW Bond St., Bend.

Science Friday Discussions: fourth week at the Shevlin-Hixon Executive Suites, 500 SW Bond Street, Bend.

continued from page 3

Join OLLI-CO for the discussions on this winner of the 2011 National Book Award for Nonfiction.

Location: Dudley's Used Book Shop

American Mind

Wednesdays, beginning February 15, 10:00 a.m.–noon

“Americans pride themselves on being doers rather than thinkers. Ideas are naturally suspect to such a people. But ideas are at the root of what it means to be American, and today's habits of thought practiced by citizens throughout the United States are the lineal descendants of a powerful body of ideas that traces back to the first European settlers and that was enriched by later generations of American thinkers.

“In their own times such great thinkers as Jonathan Edwards, Thomas Jefferson, Abraham Lincoln, William James, Martin Luther King, Jr., and many others engaged in lively and often contentious debate that helped mold America's institutions and attitudes. Their approach was frequently honed by ideas from abroad—from Locke, Hume, Kant, Darwin, Marx, Freud, and Gandhi, among others.

“[Our guide is the] distinguished historian Allen C. Guelzo, an unprecedented two-time winner of both the Lincoln Prize and the Abraham Lincoln Institute Prize for his successive books on Abraham Lincoln” (<http://bit.ly/vAAAd8B>).

Join OLLI-CO for this next course in our ongoing Wednesday history sessions.

Location: Shevlin-Hixon

A Culinary Extravaganza with Ruth Reichl

Wednesday, February 15

Join **Ruth Reichl**, the recipient of six James Beard Awards and famed restaurant critic for *The New York Times*, in a community event that celebrates and supports the state-of-the-art instructional, Jungers Culinary Center of COCC's Cascade Culinary Institute (CCI).

Reichl was food editor for the *Los Angeles Times* and editor-in-chief of *Gourmet* from 1999 to 2009. Currently editor-at-large at Random House, she also serves as editorial advisor to *Gilt Taste*, a new online culinary magazine.

Tickets are available at COCC Box Office, Bend; Paulina Springs Books, Redmond and Sisters; or by phone, 541-383-7575.

A public presentation, “American Food Now: New Trends in Eating and What They Tell Us About Our Society,” will be held at 7:00 p.m. at the Bend Senior High School, 230 NE 6th Street. Preferred seating tickets are \$25 and general admission \$15.

“A Spy in the House of Food,” a private reception to benefit the Cascades Culinary Institute, will be held at the Jungers Culinary Center, 2555 NW Campus Village Way, Bend, from 4:30–6:30 p.m. A \$125 reception and presentation package is available (\$70 of each package is tax-deductible).

Organized by the Nancy R. Chandler Visiting Scholar Program of COCC Foundation with generous support from local sponsors, including OLLI-UO. For more information, contact kaylward@cocc.edu or visit foundation.cocc.edu/vsp

Eugene/Springfield



Editor's Note: Eugene/Springfield

There's an international look to our OLLI schedule here in Eugene for the coming few months.

Perhaps that's a good thing, given the current

barrage of American political coverage, which, though necessary, will not be leaving us until November. Let's relax and look around us.

In January, David and Paula Pottinger gave a colorful comprehensive report on current life in Cuba, a country geographically close to us, yet somehow frozen in a time we know little about. In February, there will be a travel session on multihued Morocco by Wende Hitchcock; a three-book course on morality in literature by Professor Emeritus Joe Hynes—examining fiction from England and America; three comprehensive sessions on World War II covering appeasement at Munich, the decline of France, and the despot, Joseph Stalin. Not to slight Italy,

a group of opera fans will be traveling to Portland for Puccini's glorious opera, *Madama Butterfly*.

Shakespeare is truly international, so in March we will be doing our homework for the annual trip to Ashland with Emerita Professor Thelma Greenfield. Back at home in America, Kay Huston will share the romantic story of the Madisons, and OLLI will host several lectures on issues of local and global importance.

As they say: Curiosity never sleeps.

Phyllis Villec, Editor

continued from page 1

combine travel photos with a bit of research on the culture and/or history of the travel sites. Join us for a trip to places you have visited, or have always wanted to see. No passports, suitcases, or airline security lines to contend with!

If you, or someone you know, have travel experiences that you would like to share, please contact Kitty Meredith at 541-968-3881, or kittymeredith@comcast.net.

Morality and Fiction: Austen, James, Fowles

Wednesdays, February 1, 8 and 15, 1:30–3:30 p.m.

Joe Hynes, professor emeritus of English at the University of Oregon, will lead this three-part discussion series. People often contrast fiction to fact, history, reality, and the

serious in life. In these three discussions, Hynes hopes to demonstrate the inadequacies of such thinking. Looking at examples of selected fictions over three centuries, Hynes wants to play up the changing moral earnestness of those centuries as well as varieties of humor. Discussion, not flat-out lecturing, means familiarity with these books: *Persuasion*, *The Awkward Age*, and *The French Lieutenant's Woman*—so please read them all.

- February 1 will be Jane Austen's *Persuasion*
- February 8 is Henry James' *The Awkward Age*
- February 15 is John Fowles' *The French Lieutenant's Woman*

World War II: International Politics and Diplomacy

Fridays, February 3, 10, and 24, 1:30–3:30 p.m.

2012 marks the seventieth anniversary of the first full year of World War II. The OLLI curriculum committee is organizing programs that will commemorate the war. As part of this programming, the International Relations group will present a series focusing on political and diplomatic aspects of the Second World War this winter and spring. The first sessions, scheduled for three Fridays in February, are open to all OLLI members. International Relations will resume Wednesday morning meetings in March.

- Appeasement at Munich, 1938: Why Did it Happen? What Were

continued on page 10

Eugene/Springfield

1 Wednesday

1:30 p.m. Morality and Fiction: Austen, James and Fowles, Part 1 [lecture series] Presenter: Joe Hynes (AK/MX)

2 Thursday

10:00 a.m. Thinking Allowed [discussion group] How Does the UN Work? Facilitator: Chuck Adams (CN)

1:30 p.m. Armchair Traveler [lecture] Morocco. Presenter: Wende Hitchcock (AK/MX)

3:15 p.m. Spanish Conversation [study group] Facilitators: Nancy Richey and Stan Cook (CN)

3 Friday

9:30 a.m. Curriculum Committee Meeting Chair: Dina Wills, 541-687-4784. (AK)

11:00 a.m. Intermediate Spanish [study group] Facilitator: Bonnie Fromhold (BZ)

Noon—March Newsletter Submission Deadline

1:30 p.m. WWII: An International Relations Series [lecture series] Appeasement at Munich, 1938: Why did it happen? What were the alternatives? Presenter: Kitty Meredith (AK/MX)

6 Monday

10:00 a.m. Creative Writing [study group] Facilitator: Livvie Taylor-Young (CN)

12:30 p.m. Great Decisions [short course] Facilitator: Denis Snook. Preregistration required. (CN)

1:30 p.m. Academy Award Winners [film series] *All About Eve*. Introduced by Martha Sargent (AK/MX)

3:45 p.m. French Language [study group] Facilitator: Elaine deMartin Webster (BZ)

7 Tuesday

9:30 a.m. Membership, Promotions and Awards Committee Meeting Chair: Betty Hosokawa, 541-683-1907 (CN)

10:30 a.m. Understanding Science [DVD study group] Understanding Genetics: Biotechnology and the Environment; Manipulating DNA by PCR and Other Methods. Facilitator: John O'Brien (AK)

1:30 p.m. Art History [DVD study group] Hermitage Masterpieces: Rubens, van Dyck and the 17th Century Flemish Painters; Rembrandt and the 17th Century Dutch Masters. Facilitator: Ray Staton (AK)

3:00 p.m. Interpretive Play Reading [study group] Facilitator: Esther Erford (CN)

8 Wednesday

1:30 p.m. Morality and Fiction: Austen, James and Fowles, Part 2 [lecture series] Presenter: Joe Hynes (AK/MX)

9 Thursday

10:00 a.m. News and Views [discussion group] Facilitator: Gary Carter (CN)

1:30 p.m. Music Appreciation [DVD study group] Thirty Greatest Orchestral Works: Vivaldi "The Four Seasons". Facilitator: Dennis Lawrence (AK)

3:15 p.m. Spanish Conversation [study group] Facilitators: Nancy Richey and Stan Cook (CN)

10 Friday

9:30 a.m. Governing Council Meeting President: Phyllis Villec, 541-461-4567 (MX)

11:00 a.m. Intermediate Spanish [study group] Facilitator: Bonnie Fromhold (BZ)

1:30 p.m. WWII: An International Relations Series [lecture series] France: The Decline and Fall of a Great Empire. Presenter: John Attig (AK/MX)

13 Monday

10:00 a.m. Philosophy Salon [study group] Private Property, The Commons, and Taking Issues (philosophy of law), part 2 of 2. Presenter: Beate Galda. Facilitators: Byron Chell, Lorraine Ironplow and Dennis Lawrence (CN)

12:30 p.m. Great Decisions [short course] Facilitator: Denis Snook. Preregistration required. (CN)

1:30 p.m. Academy Award Winners [film series] *Out of Africa* Introduced by Howard Schuman (AK/MX)

3:45 p.m. French Language [study group] Facilitator: Elaine deMartin Webster (BZ)

14 Tuesday

10:00 a.m. Historical Novels [book group] *The Map of Love* by Ahdaf Soueif. Facilitators: Corinne Hunt (CN)

15 Wednesday

1:30 p.m. Morality and Fiction: Austen, James and Fowles, Part 3 [lecture series] Presenter: Joe Hynes (AK/MX)

16 Thursday

10:00 a.m. Thinking Allowed [discussion group] Are We All Being Watched? Facilitator: Chuck Adams (CN)

Noon Poetry Writing [study group] Facilitator: Gloria Wells (CN)

3:15 p.m. Spanish Conversation [study group] Facilitators: Nancy Richey and Stan Cook (CN)

17 Friday

11:00 a.m. Intermediate Spanish [study group] Facilitator: Bonnie Fromhold (BZ)

Eugene/Springfield

20 Monday

10:00 a.m. Creative Writing [study group]
Facilitator: Livvie Taylor-Young (CN)

12:30 p.m. Great Decisions [short course]
Facilitator: Denis Snook.
Preregistration required. (CN)

1:30 p.m. Academy Award Winners [film series] *Chariots of Fire* Introduced by Jack Powell (AK/MX)

3:45 p.m. French Language [study group]
Facilitator: Elaine deMartin Webster (BZ)

21 Tuesday

10:30 a.m. Understanding Science [DVD study group] Understanding Genetics: DNA in Identification-Forensics; DNA and Evolution. Facilitator: John O'Brien (AK)

1:30 p.m. Art History [DVD study group] Valazquez, El Greco, Goya and the Spanish Masters; French Classical Style of the 17th and 18th Centuries. Facilitator: Ray Staton (AK)

3:00 p.m. Interpretive Play Reading [study group] Facilitator: Esther Erford (CN)

22 Wednesday

Noon Charter Member Recognition Luncheon [social] (AK/MX/CN)

23 Thursday

10:00 a.m. News and Views [discussion group] Facilitator: Gary Carter (CN)

1:30 p.m. Music Appreciation [DVD study group] Thirty Greatest Orchestral Works: Bach "Brandenburg Concerto No. 2." Facilitator: Dennis Lawrence (AK)

3:15 p.m. Spanish Conversation [study group] Facilitators: Nancy Richey and Stan Cook (CN)

24 Friday

11:00 a.m. Intermediate Spanish [study group] Facilitator: Bonnie Fromhold (BZ)

1:30 p.m. WWII: An International Relations Series [lecture series] Joseph Stalin: Despot and Diplomat. Presenter: Joyce Churchill (AK/MX)

27 Monday

10:00 a.m. Activities and Travel Committee Chair: Veronika Walton, 541-344-1565 (AK)

10:00 a.m. Philosophy Salon [study group] Truths, Values, and Wisdom. Presenter: Steve Kilston. Facilitators: Lorraine Ironplow and Dennis Lawrence (CN)

12:30 p.m. Great Decisions [short course] Facilitator: Denis Snook. Preregistration required. (CN)

1:30 p.m. Academy Award Winners [film series] *Shakespeare in Love*. Introduced by John Attig (AK/MX)

3:45 p.m. French Language [study group] Facilitator: Elaine deMartin Webster (BZ)

28 Tuesday

10:00 a.m. Historical Novels [book group] *The Map of Love* by Ahdaf Soueif. Facilitator: Corinne Hunt (CN)

1:30 p.m. Classics/Philosophy [book group] *Darwin's Century* by Loren Eiseley. Facilitator: Paul Holbo (CN)

29 Wednesday

1:30 p.m. Corruption and Nationalism in Central Europe [lecture] Presenter: Keith Eddins (AK/MX)

Locations

All meetings held at Baker Downtown Center, 975 High Street, unless otherwise stated

Key

AK = Alaska Room
MX = Mexico Room
CN = Canada Room
BZ = Belize Room
TBA = To Be Announced

Renewals

Mail renewals and membership applications to:

OLLI-UO Eugene Springfield
1277 University of Oregon
Eugene, OR 97403-1277

Or drop them off at the office:
975 High Street, Eugene

Questions?

Call 541-346-0697

Grid calendars available in the office or online at <http://osher.uoregon.edu>

OLLI Staff Contacts:

Eugene/Springfield Staff:

OLLI-UO Program Director:
Ruth Heller, 541-346-0697

Academic Extension Classroom
Manager:
Patrick Burns, 541-346-4231

OLLI Committee Contacts:

Council President:
Phyllis Villec, 541-461-4567

Curriculum Chair:
Dina Wills, 541-687-4784

Activities and Travel:
Veronika Walton, 541-344-1565

Membership, Promotions and Awards:
Betty Hosokawa, 541-683-1907

Eugene/Springfield

continued from page 7

the Alternatives? Presenter: Kitty Meredith

- France: The Decline and Fall of a Great Empire. Presenter: John Attig
- Joseph Stalin: Despot and Diplomat. Presenter: Joyce Churchill

Corruption and Nationalism in Central Europe: Symptoms of 'Democracy Fatigue' in Post-Communist Societies?

Wednesday, February 29,
1:30–3:30 p.m.

Retired diplomat and Eugene resident **Keith A. Eddins**, who served most recently as the American Chargé d'affaires in Bratislava, will use case studies from the Czech Republic, Hungary, Poland, and Slovakia to discuss how democracy and the rule of law have recently suffered notable setbacks in these former Warsaw Pact states.

Drawing on his personal experiences, public source materials, and some of the diplomatic cables published by Wikileaks, he will ask whether the U.S. and its European allies acted too hastily in admitting these emergent democracies to NATO and the EU, thus giving up considerable political and economic leverage too quickly. In a diplomatic career that lasted three decades, Eddins' assignments included service at the U.S. embassies in Prague, Moscow, and Santo Domingo, at the U.S. Mission to NATO, in the State Department's European affairs bureau, and as a Special Assistant to Secretary of State George P. Shultz.

The Opera Bus is Leaving

Sunday, February 5

On Sunday, February 5, we will leave Eugene at 10:00 a.m. in time to have lunch in Portland and attend a performance of Puccini's magnificent opera *Madama Butterfly* at 2:00 p.m. at the Keller Auditorium. Price of tickets plus bus fare is \$115. If the bus is not filled with operagoers, others who would like to visit Portland are welcome at \$48 bus fare. Please call Experience Oregon at 541-342-2662, P.O. Box 338, Junction City, OR 97448, to register. Questions? Phyllis Villec at 541-461-4567 or Veronika Walton at 541-344-1565.

Let's Go Local: Jazz at the Shedd

Thursday, March 1

Hurry, hurry, hurry!! This is your last chance to join the OLLI group for an evening of jazz, featuring music by the Gershwin Brothers as performed by Carl Woideck and his talented UO group. Many familiar Gershwin songs have become classic jazz standards. Enjoy an evening at The Shedd, at the corner of Broadway and High Street, for a special "Seniors Night Out" rate of \$14.50 for a group of twenty or more, or \$15.50 for a group less than twenty.

Register with your payment at the OLLI front desk by February 1 for an evening of great music. An optional three-course dinner prior to the 7:30 p.m. concert is offered at \$19.75, including tip.

See the January newsletter for more information, or call Pat Bitner, coordinator, 541-485-3971.

Shakespeare in March

Wednesday and Thursday,
March 14–15

Sign up with Experience Oregon, 541-342-2662, if you would like to see three great plays: *The White Snake* based on an ancient Chinese legend; the Shakespeare favorite *Romeo and Juliet*; and Chekhov's famous *The Seagull* performed in the New Theatre.

Cost this year for the package is \$184 for double occupancy; \$225 for single. Please make your reservations early. Call Hazel Jones, 541-345-7812, with any questions.

All OLLI members are invited to a special preview presentation on Wednesday, March 7, at 1:30 p.m. UO Professor Emerita **Thelma Greenfield**, will offer insights into two of the plays from OSF's season: Shakespeare's *Romeo and Juliet*, and Chekhov's *The Seagull*. Members of the Interpretive Play Reading group will illustrate the lecture with selections from the two plays.

The Madisons

Mondays, March 5, 12 and 19,
1:30–3:30 p.m.

Educator **Kay Huston** returns to share the wonderful and romantic story of the "great little Madison" and his "Darling Dolley." Together, the Madisons faced many crises, both professional and personal, including the War of 1812, the burning of the White House by the British, and the major disappointment in Dolley's son from her first marriage. Mark your calendars now for this captivating series!

Eugene/Springfield

Academy Award Winning Films Series

Mondays, March 26, April 2, 9, 16,
and 23, 1:30–3:30 p.m.

Our film series resumes in late March
and early April with five additional
showings:

- *A Beautiful Mind* (2001)
- *Marty* (1955)
- *The Life of Emile Zola* (1937)
- *From Here to Eternity* (1953)
- *The Apartment* (1960)

Tearing Down the Gates: Art and Culture in the Age of the Internet

Wednesday, March 28,
1:30–3:30 p.m.

David Kolb, professor emeritus
of philosophy, Bates College, will
present an expanded version of the
lecture he gave during our September
“Discover Lifelong Learning” event.

Who guards the gates to art and
culture? Do we need either gates or
guardians? This lecture will try to
avoid both rapture and despair as it
examines the impact of new tech-
nologies and media upon the arts and
popular culture. Who will create?
Bring your insights, biases, outrage,
and delight to this lecture!

Honorable Mention: Gary Carter

This month’s Honorable Mention,
Gary Carter, came to Eugene,
Oregon from Britton, South Dakota.
Immediately after graduation, he
landed a job via a telephone inter-
view with the Lane County Mental
Health Division, and after waiting
a few months for his wife, Judy, to
graduate from the University of
Minnesota, they moved to Eugene.

He began a notable career as a
counselor and thereafter went into

administration of the Health and
Human Services Division. The Gary
B. Carter House Residential Treat-
ment Center in Springfield was
named for him in recognition of his
outstanding career accomplishments.

He retired early in 1993, and
in October of that year, he joined
Learning in Retirement (OLLI’s
predecessor). He has been exceed-
ingly active in our organization, and
has served four years on the LIR
Council with a concurrent six-
year “overlap” on the Membership
Committee.

Along the way, Gary and several
other members recognized a need for
the creation of an interested group to
analyze and discuss the impact and
importance of real world events on
our lives, so he organized the News
and Views discussion group. The
group began holding lively sessions in
1995 with Gary as the initial discus-
sion leader. This arrangement went
on for several years. He was spelled
for a two-year period by Les Corey,
resumed leadership, and for the last
eight years he has been going strong
as the current discussion leader.

Gary uses humor to start every
session, on the premise that laughter
makes people agreeable or at least
tolerant of other’s viewpoints and
helps them listen to what is being
said.

OLLI is indeed fortunate to have
Gary Carter as one of our members.
Our congratulations go to him for
his selection as this month’s Honor-
able Mention...and we thank him
for his continued efforts on our
member’s behalf.

Learning Circle

Monthly Schedule

Monday

10:00 a.m. Creative Writing:
first and third weeks
Philosophy Salon: second and
fourth weeks
3:45 p.m. French Language: weekly

Tuesday

10:00 a.m. Historical Novels:
second and fourth weeks
10:30 a.m. Understanding Science:
first, third and fifth weeks
1:30 p.m. Art History: first and
third weeks
Classics/Philosophy: fourth
week
3:00 p.m. Interpretive Play Reading:
first and third weeks

Wednesday

10:00 a.m. International Rela-
tions: first and third weeks;
no Wednesday meetings in
February. See related article on
page 7.

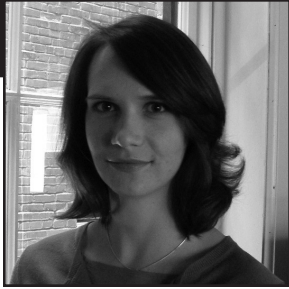
Thursday

10:00 a.m. Thinking Allowed: first
and third weeks; News and
Views: second and fourth weeks;
Fifth Thursday Discussion:
fifth week
Noon Poetry Writing: third week
1:30 p.m. Music Appreciation:
second and fourth weeks
3:15 p.m. Spanish Conversation:
weekly

Friday

11:00 a.m. Intermediate Spanish:
weekly

Portland



Editor's Note: Portland

Join OLLI-UO on Saturday, February 4, for Discover Lifelong Learning Day, a one-day OLLI-UO Open House designed to introduce the public to

OLLI-UO lectures, workshops, and discussion groups. The success of this Open House depends on OLLI member participation. With your involvement, we can keep discussions moving and showcase the wonderful social connections and opportunities OLLI-UO membership provides. We cannot do it without your support.

To help us plan for this event, we're asking the public and OLLI-UO members to register for sessions. Please call the OLLI-UO office at 503-412-3653 or at 800-824-2714 to sign up.

In addition to the support needed the day of the Open House, we are also looking for volunteers to help promote this event by distributing fliers. Do you belong to

a club or religious organization? Do you know of anyone who might be interested in OLLI-UO? If so, stop by the OLLI-UO office to pick up fliers for distribution. Upon request, we will email you a link to the event description for easy e-mail distribution to friends and family.

To register or volunteer for Discover Lifelong Learning Day, call the OLLI-UO office at 800-824-2714 or at 503-412-3653. We hope to see you there!

Adrianna Mahoney, Program Coordinator

continued from page 1

- Leaving a Trace: Writing About Your Life, an introductory workshop to the art of memoir writing with Judi McGavin

We need your help in order to make this day a success. Invite your friends to register, help distribute fliers, sign up to be a host or simply register to participate and enjoy these sessions. Two breaks are scheduled for the day, including a brown bag lunch session with a catered box lunch option.

To plan for this event, we're asking OLLI members and the public to register for these free sessions. To register, please contact the OLLI-UO office at 503-412-3653 or 800-824-2714. Please see the OLLI-UO Portland schedule on page fourteen for class times.

Chinese Culture

Saturday, February 4,
11:00 a.m.–noon

As part of Discover Lifelong Learning Day, OLLI-UO member and Professor Emeritus **Phil Silverman** will present on Chinese Culture. This lecture will provide a selective examination of China's history and major social institutions, such as the family and religion. Silverman will examine various contradictions and conflicts of Chinese life today that make the country an inexhaustible source of fascination for some and a troubling concern for others.

Presenter Philip Silverman is an OLLI member and professor emeritus of anthropology from California State University Bakersfield. Register by calling the OLLI office at 503-412-3653 or 800-824-2714.

Popular Houses of Oregon

Saturday, February 4, 1:00–2:00 p.m.
and Wednesdays, February 8–22,
1:30–3:00 p.m.

For over 150 years, settlers to Oregon have constructed a range of common houses that contribute to the state's varied residential landscapes.

Professor **Thomas C. Hubka** will present the full range of these houses and analyze what is typical and unique about them in relation to residences from the rest of the country.

Through a series of slide lectures, he will outline the major periods of housing construction and describe the dominant house types that have been built in various periods throughout Oregon, including bungalows, Capes, four-squares, early settlement houses, ranches, mobile homes, and multi-unit houses. Residences will also be interpreted

Portland

according to their construction systems, design development, and family usage and history.

Hubka is a professor emeritus from the Department of Architecture at the School of Architecture, University of Wisconsin—Milwaukee. Through almost forty years of scholarship and teaching he has attempted to link the practice and teaching of architecture to historical and cultural context.

He is currently working on two books about the development of American housing and domesticity in dwellings such as workers' cottages, bungalows, and duplexes: *Houses without Names: Architecture Nomenclature and the Classification of America's Common Houses*, and *From Have Nots to Haves: How the Working Class Became Middle Class in Housing, 1880–1930*. Register by calling the OLLI office at 503-412-3653 or 800-824-2714.

Darfur and the Crisis in Sudan

Tuesday, February 14, 2:00–3:50 p.m. Join Dr. **Peter Bechtold** for an overview of what was formerly the largest country in Africa (until July 2011). Bechtold will describe its demographic and geographic diversity of 600 tribes, 400 languages and 200 religious identities. Incorporating many photos taken during his recent visit to Sudan and Darfur, Bechtold will identify the many problems typical of African nations and the role of US policy in affecting the situation there.

Dr. Peter Bechtold is chairman emeritus, Near East North Africa Area Studies, Foreign Service Institute. He is an award-winning

professor of more than 11,000 U.S. government employees (State Department, DOD, Commerce, CIA, FBI, USAID, USIA) in intensive courses and long-term seminars, and has conducted private briefings for numerous ambassadors and flag officers. Dr. Bechtold received PhDs from Princeton University in Near East studies and political science (<http://www.drbechtold.com/>).

Fine Art Prints: History and Techniques

Tuesdays, February 21–March 20, 1:30–3:30 p.m.

Printmaking has been an art and craft throughout the history of Western art, yet has often been neglected in the mainstream studies of painting and drawing. But as we will notice, most prominent artists over time have also been major printmakers. In this richly illustrated course we will see Durer, Rembrandt, Goya, Picasso and scores of other artists all favoring techniques suitable to their own styles.

We define a print as simply an artist's image transferred to paper in order to make multiple impressions for distribution. Sometimes the intent was to reproduce a painting or to illustrate a text, but more significantly to create a work of art best expressed in a printing medium. We will explain the basic techniques of printmaking: Relief (e.g. woodcut), Intaglio (e.g. etching), Planar (e.g. lithography) as we weave them and their many ramifications into relevant social and artistic eras.

Art Historian, **Joan Kirsch**, teaches this course. Kirsch is currently a lecturer in art history, a

document for the Portland Art Museum, and an artist of woodcuts and collage.

Registration is encouraged for this short course. Call the OLLI-UO office at 503-412-3653 to reserve your space. This course is free for OLLI members and open to the public for a fee of \$40.00.

Executive Order 9066—A Panel Discussion with Peggy Nagae and Oregon Nikkei Endowment

Wednesday, February 22, 6:00 p.m. February 19, 2012 marks seventy years since the signing of Executive Order 9066, which authorized the mass incarceration of 120,000 Japanese Americans during World War II, two-thirds of whom were American citizens. To remember this history, Oregon Nikkei Endowment and the Portland State University Center for Japanese Studies will present lectures and events during February.

On February 22, OLLI-UO in Portland will host the Oregon Nikkei Endowment for a moderated panel discussion with recent graduate students on the legacy of Executive Order 9066. This discussion will be moderated by **Peggy Nagae**, who served as the lead attorney in *Yasui v. United States*, re-opening Mr. Yasui's Supreme Court case for violating the curfew imposed upon Japanese Americans during World War II.

This event is open to the public. Invite your friends and family to join you. For more information on events held this month, visit the Oregon Nikkei Endowment online at <http://www.oregonnikkei.org/activities.htm>.

continued on page 16

Portland

1 Wednesday

10:30 a.m. Great American Music: Broadway Musicals [DVD study group] The Essence of the Musical; The Minstrel Era (1828 to c. 1900). Facilitator: Joanna Rood (150)

2 Thursday

10:30 a.m. Extra Innings [discussion group] Facilitator: Ken Calvin (149)

Noon—Literati [discussion group] Film selection: *The Picture of Dorian Gray* (1945, 110 minutes). Facilitator: George Davidson (148C)

2:30 p.m. Leaving a Trace: Writing About Your Life [study group] Facilitator: Judi McGavin (149)

4 Saturday

Discover Lifelong Learning Day [Open House] Preregistration is required. Call the OLLI office at 503-412-3653 or 800-824-2714.

10:00 a.m. The Rise of Humans: Great Scientific Debates [DVD discussion group] Neandertals—Extinct or Ancestors? Facilitator: Mike Ellis

11:00 a.m. Chinese Culture [lecture] Presenter: Philip Silverman

Noon—Brown Bag Lunch [social]

1:00 p.m. Houses of Oregon [lecture] Presenter: Thomas Hubka

2:00 p.m. Coffee and refreshments [social]

2:30 p.m. Leaving a Trace: Writing About Your Life [introductory workshop] Instructor: Judi McGavin

7 Tuesday

10:30 a.m. The Rise of Humans: Great Scientific Debates [DVD study group] Did Neandertals Speak? Neandertals—Extinct or Ancestors? Facilitator: Mike Ellis (150)

12:30 p.m. Brown Bag Lunch [social] All members welcome to attend. (149)

1:00 p.m. D-Day, The Parthenon, Charlie Chaplin, Matisse: The Art of Creating a Digital Presentation [workshop, session three of four] Instructors: UO Librarians Karen Munro and Susan Gilman. (150)

8 Wednesday

10:30 a.m. Great American Music: Broadway Musicals [DVD study group] Evolution of the Verse/Chorus Song; The Ragtime Years (c. 1890–1917). Facilitator: Joanna Rood (150)

12:30 p.m. Snack and Yak [informal planning meeting] All members welcome to attend. Refreshments provided. (148C)

1:30 p.m. Popular Houses of Oregon [lecture series, session two of four] Presenter: Thomas Hubka (152)

9 Thursday

10:30 a.m. Extra Innings [discussion group] Facilitator: Ken Calvin (149)

2:30 p.m. Leaving a Trace: Writing About Your Life [introductory workshop] Instructor: Judi McGavin (149)

14 Tuesday

10:30 a.m. The Rise of Humans: Great Scientific Debates [DVD study group] Is Our Neandertal Heritage Important? Multiregional Evolution versus Out of Africa. Facilitator: Mike Ellis (150)

12:30 p.m. Brown Bag Lunch [social] All members welcome to attend. (149)

1:00 p.m. D-Day, The Parthenon, Charlie Chaplin, Matisse: The Art of Creating a Digital Presentation [workshop, session four of four] Instructors: UO Librarians Karen Munro and Susan Gilman. (150)

2:00 p.m. Darfur and the Crisis in Sudan [lecture] Presenter: Dr. Peter Bechtold (152)

15 Wednesday

10:30 a.m. Great American Music: Broadway Musicals [DVD study group] The Vaudeville Era (1881 to c. 1935); Tin Pan Alley. Facilitator: Joanna Rood (150)

12:30 p.m. Brown Bag Lunch [social] All members welcome to attend. (148C)

1:30 p.m. Popular Houses of Oregon [short course, session three of four] Presenter: Thomas Hubka (152)

16 Thursday

10:30 a.m. Extra Innings [discussion group] Facilitator: Ken Calvin (149)

1:00 Literati [discussion group] Selection: *The Tigress of Forlì*, by Elizabeth Lev. Facilitator: George Davidson (148C)

2:30 p.m. Leaving a Trace: Writing About Your Life [study group] Facilitator: Judi McGavin (149)

Portland

21 Tuesday

10:30 a.m. The Rise of Humans: Great Scientific Debates [DVD study group] Climate's Impact on Our Evolution; Language—Adaptation or Spandrel? Facilitator: Mike Ellis (150)

12:30 p.m. Brown Bag Lunch [social] All members welcome to attend. (149)

1:30 p.m. Printmaking: Techniques and History [short course, session one of five] Introduction; Examples of Printmaking Techniques 15th and 16th century, including Durer and others. Presenter: Joan Kirsch (152)

22 Wednesday

10:30 a.m. Great American Music: Broadway Musicals [DVD study group] Broadway in Its Infancy; The Revue versus the Book Musical. Facilitator: Joanna Rood (150)

12:30 p.m. Brown Bag Lunch [social] All members welcome to attend. (148C)

1:30 p.m. Popular Houses of Oregon [short course, session four of four] Presenter: Thomas Hubka (152)

6:00 p.m. Executive Order 9066—A Panel Discussion with Peggy Nagae and Oregon Nikkei Endowment [lecture/discussion] (event room)

23 Thursday

10:30 a.m. Extra Innings [discussion group] Facilitator: Ken Calvin (149)

Noon—Literati [discussion group] Selection: Film TBD. Facilitator: George Davidson (148C)

2:30 p.m. Leaving a Trace: Writing About Your Life [study group] Facilitator: Judi McGavin (149)

28 Tuesday

10:30 a.m. The Rise of Humans: Great Scientific Debates [DVD study group] Why Did Humans Start Creating Art? Clovis or Pre-Clovis? Facilitator: Mike Ellis (152)

12:30 p.m. Brown Bag Lunch [social] All members welcome to attend. (149)

1:30 p.m. Printmaking: Techniques and History [short course, session two of five] 16th and 17th century, including Rembrandt and others. Presenter: Joan Kirsch (152)

Location

UO in Portland White Stag Block
70 NW Couch Street, Portland

Unless otherwise specified, all programs are:

- 1) Held at the White Stag Block.
- 2) Open only to OLLI-UO members and those using the OLLI-UO one-month guest pass.

Key

105=WSB, Room 105
150 = WSB, Room 150
152 = WSB, Room 152
148C = WSB, Room 148C,
OLLI Office Suite
TBA = To Be Announced

Series Information

Some program series and short courses may continue in the coming months. Information on those upcoming topics should be available from the OLLI-UO office and/or the course leader. Schedule information provided in the next newsletter.

Questions?

Call 503-412-3653

Grid calendars available in the office or online at <http://osher.uoregon.edu>

OLLI Staff Contacts:

Portland Program Staff:

Adrianna Mahoney, 503-412-3653

Nikki Klutho, 503-412-3653

OLLI-UO Program Director:

Ruth Heller, 800-824-2714

29 Wednesday

10:30 a.m. Great American Music: Broadway Musicals [DVD study group] Superstars on the Horizon; Transition into the Jazz Age (1916–20). Facilitator: Joanna Rood (150)

12:30 p.m. Brown Bag Lunch [social] All members welcome to attend. (148C)

1:30 p.m. The Future of Television Network News [lecture/discussion] Presenter: Al Stavitsky (152)

Parking and Transportation Tips

Finding parking can often seem like a challenge for OLLI members attending events at the Portland White Stag Block. To make that task a little easier, we would like to share the following information:

On-Street Parking

There are over 7,000 on-street parking spaces in the downtown area. The White Stag Block is surrounded by ninety-minute parking meters; however there are five-hour meters just blocks away, near NW 3rd and Flanders. The parking meter rate is \$1.60 per hour. Parking meters operate 8:00 a.m. to 7:00 p.m., Monday through Saturday, and 1:00 to 7:00 p.m. on Sundays.

Garage Parking

Another option is to park in the Smart Park Garage at NW Naito and NW Davis, just one block north of the White Stag Block. Smart Park Garages offer affordable parking at \$1.50 per hour.

Public Transportation

Both the Red and Blue Tri-Met Max lines run right past the White Stag Block with a convenient stop at Old Town/China Town just one block north. Honored citizens (those 65+) can purchase a two-hour ticket for just one dollar.

Safety First

A security guard is available upon request to escort you to the MAX or your vehicle. For more information on this service, please call 503-412-3653.



UNIVERSITY OF OREGON

ACADEMIC EXTENSION
Osher Lifelong Learning Institute
1277 University of Oregon
Eugene, OR 97403-1277

Learning Circle

Monthly Schedule

Tuesday

10:30 a.m. The Rise of Humans:
Great Scientific Debates: weekly

Wednesday

10:30 a.m. Great American Music:
Broadway Musicals: weekly

Thursday

10:30 a.m. Extra Innings: weekly
Noon Literati [film] February 2 and 23
1:00 p.m. Literati [book discussion]
February 16
2:30 p.m. Leaving a Trace—Writing
About Your Life: weekly

For questions, call the OLLI-UO
office at 503-412-3653 or
800-824-2714.

Osher Lifelong Learning Institute at the University of Oregon

Active Minds for Active Lives
<http://osher.uoregon.edu>

Portland: continued from page 13

The Future of Television Network News

Wednesday, February 29,
1:30–3:00 p.m.

Join Professor **Al Stavitsky**, senior associate dean of the UO Turnbull Center to explore the future of television network news. We know that television has changed over the years from cable, to dish, to digital. It's even possible to watch your favorite shows and news reports without a television. All one needs today is an Internet connection. So how do local news networks keep up? To operate within budgets, local newscasts around the nation have been pulled from stations or combined with other newsgathering resources. How will

this affect the delivery of local news? How will the broadcast-TV model change?

This will be Professor Stavitsky's final lecture with OLLI-UO in Portland. Beginning April 1, Stavitsky will start his new position as Dean of the Donald W. Reynolds School of Journalism at the University of Nevada in Reno. He has been with the University of Oregon since 1990.

An equal-opportunity, affirmative-action institution committed to cultural diversity and compliance with the Americans with Disabilities Act. This publication will be made available in accessible formats upon request. Accommodations for people with disabilities will be provided if requested in advance. © 2012 University of Oregon