



At the University of Oregon

The Oregon Sage

Monthly newsletter from the Osher Lifelong Learning Institute at the University of Oregon

Volume 3, Number 2

February 2013

Osher Lifelong Learning Institute • Academic Extension • 1277 University of Oregon, Eugene, OR 97403-1277
800-824-2714 • osher@uoregon.edu • http://osher.uoregon.edu

INSIDE

Central Oregon

Editor's Note	2
Upcoming Presentations	2
Schedule	4
Learning Circle	6

Eugene/Springfield

Editor's Note	7
Upcoming Presentations	7
Schedule	8
Learning Circle	11

Portland

Editor's Note	12
Upcoming Presentations	12
Schedule	14
Learning Circle	16

CENTRAL OREGON—Armchair Traveler: Australia and New Zealand

Thursday, February 28, 1:30–3:30 p.m., UO Center

This past fall, **Jim Hammond** joined a group of astronomy buffs on a tour of Australia and New Zealand. The group's primary purpose was to observe the November 14 total solar eclipse in Port Douglas, Queensland, Australia.

The tour included visits to some of the scenic and cultural highlights of these two southern hemisphere countries. Jim will show photos of some of the sights, including Melbourne, a sheep and canola farm, Siding Spring Observatory, Sydney, Kuranda in Australia, and Queenstown, Dunedin, Rotorua in New Zealand. He'll also share photos of the eclipse.

continued on page 2

EUGENE/SPRINGFIELD—Hiking the Pacific Crest Trail

Friday, February 1, 1:30–3:30 p.m.

Author and *Register-Guard* columnist **Bob Welch** discusses his 452-mile journey on the Oregon section of the Pacific Crest Trail in 2011. Accompanied by a short video slideshow, he tells about what his hiking partner, Dr. Glenn Petersen, called "the trip of a lifetime." Mosquitoes. Snow. Blisters. Fatigue. The enemies were myriad. Would the two nearly-sixty-year-olds make it from border to border? The answer lies in Welch's new book, *Cascade Summer: My Adventure on Oregon's Pacific Crest Trail*, which twines two stories: Welch's and that of Judge John Waldo, who hiked these same stretches more than a century ago and, in a revolutionary effort for his times, fought to have the Cascade Range set off as

continued on page 7

PORTLAND—End of Life Decisions

At the request of members in the Snack and Yak curriculum planning meetings, OLLI-UO in Portland will host a short series that looks at end-of-life issues. These sessions are designed to be informative as well as opportunities for questions and discussion. We are asking OLLI members to register for these presentations to gauge attendance.



UNIVERSITY
OF OREGON

continued on page 12

Central Oregon



Editor's Note: Central Oregon

The weather outside is frightful...at least for those of us who don't head to the slopes. While winter may have started with a very cold roar here in Central Oregon,

there are lots of ways to keep warm indoors with OLLI. There are a variety of classes to keep you going all winter.

Join us Monday mornings for Masterworks of American Art, facilitated by Roger Aikin. The twenty-four-lecture class meets every Monday at 10:00 a.m. and continues through March 24.

On Wednesday mornings at 10:00 a.m., "Justice" with Professor Michael Sandel of Harvard University is providing a great deal to think and talk about. The twelve-lecture series continues through March 20.

Friday has two offerings to keep you out of the snow and cold. On Friday mornings at 10:00 a.m., Trails of Evidence: How Forensic Science Works has provided a fascinating

look at real crime scene investigators (CSI) and the justice system. The class continues through March 29.

On Friday afternoons at 1:30 p.m., Oceanography is helping us to understand how the wet and salty 71 percent of the planet works. The oceanography course ends this month (February 22) and will be followed by a presentation on the Hadron Collider on March 1. A new science class based on the book *Life Ascending: The Ten Great Inventions of Evolution* begins on March 8 (see the article in this issue).

If you need a little socializing, make your reservation for the First Tuesday Roundtable Luncheon held at Tetherow at noon. E-mail Harlie Peterson at harliepete@hotmail.com to join in. The OLLI-CO Book Group is a great way to while-away the time waiting for spring. Join the group on the first and third Tuesday of each month beginning at 10:00 a.m.

Don't miss out on the fun and the knowledge. See you in class!

Jeanne Freeman, Editor, Central Oregon

continued from page 1

Join OLLI with Jim as he takes us on his fabulous adventure.

CSI Oregon: Tour of the Oregon State Police Bend Forensic Laboratory

Thursday, February 14, 10:00 a.m. and 2:00 p.m. 20355 Poe Sholes Drive, Ste. 200, Bend, OR 97701 If you've ever wanted to see a real crime scene investigation (CSI) facility, then join OLLI-CO for a tour of the Oregon State Police Forensic Services Division. It is a "nationally accredited forensic laboratory system serving all state and local law enforcement agencies, medical examiners, and prosecuting attorneys in Oregon. The Division also performs forensic analysis on criminal cases for the defense upon a court order.

"The Forensic Services Division

provides Oregon's only full service forensic laboratory system. The analysts provide technical assistance and training, evaluate and analyze evidence, interpret results, and provide expert testimony related to the full spectrum of physical evidence recovered from crime scenes" (<http://1.usa.gov/YnL00w>).

The lab provides forensic services—biological processing, controlled substance analysis, crime scene investigation, firearms/tool marks processing, latent print processing and comparison, and trace processing—to Deschutes, Jefferson, Crook, Klamath, and Lake Counties.

In July 2010, the Oregon State Police Bend Forensic Laboratory moved to its new facility in Bend. The building is shared with the Oregon State Police Bend Area Command, which includes the Patrol, Criminal

and Fish and Game Divisions, and the Deschutes County 911 Dispatch Center. The laboratory is approximately 5,800 square feet, with an additional 1,200 square feet in an outbuilding used for examination of vehicles and test firing of firearms.

If you're attending OLLI's current offering, Trails of Evidence: How Forensic Science Works, you won't want to miss this opportunity to see Central Oregon's own CSI facility.

Tours are scheduled at 10:00 a.m. and 2:00 p.m. and will be assigned as reservations are received. **Only ten people are allowed on each tour**, so if there are less than ten, we will all be put into the same time slot. Call Martie Steigleder at the UO Center office to make your reservation: 541-728-0685.

Central Oregon

The Physics of Elementary Particles and the Large Hadron Collider

Friday, March 1, 1:30–3:30 p.m.,
UO Center

Particle physics may sound like a daunting subject, but don't let it intimidate you. This course for non-specialists will give an overview of what is known about the fundamental components of matter and provide an introduction to the Large Hadron Collider (LHC), the world's newest and largest scientific instrument for particle physics. The first half of the class will discuss what physicists have learned about the composition of matter since Democritus, the present understanding of matter at the most fundamental level, and outstanding questions that still need answers. The second half of the class will focus on the LHC. This global scientific enterprise extends seventeen miles in a circular tunnel under France and Switzerland, has taken scientists and engineers from over forty countries more than ten years to build, and is just beginning to give answers to the outstanding questions.

Lawrence Price is a senior physicist at Argonne National Laboratory near Chicago. He received his PhD in physics from Harvard University in 1970 and taught at Columbia University before joining Argonne. His career in research has been devoted to inventing, building, and exploiting the complex (and sometimes clever) instruments needed to advance knowledge in particle physics. He has served as director of the High Energy Physics Division at Argonne. Since 1994, he has been a member of the international collaboration building

and using the ATLAS detector for the LHC and has held multiple leadership positions in that large collaboration. Price is a Fellow of the American Physical Society.

All members are invited to join OLLI-CO's Science Friday group to hear about the discoveries that have been made.

February Book Discussion

***The Righteous Mind: Why Good People Are Divided by Politics and Religion* by Jonathan Haidt**

Tuesdays, February 5 and 19,
10:00 a.m.–noon, UO Center

Facilitated by: Joe Stevens

See January Newsletter for summary and review.

March Book Discussion

***1861: The Civil War Awakening* by Adam Goodheart**

Tuesdays, March 5 and 19,
10:00 a.m.–noon, UO Center

“An epic of courage and heroism beyond the battlefields, 1861 is Adam Goodheart's account of how the Civil War began and a second American revolution unfolded, setting Abraham Lincoln on the path to greatness and millions of slaves on the road to freedom. In this gripping and original book, Goodheart introduces us to a heretofore little-known cast of Civil War heroes—among them an acrobatic militia colonel, an explorer's wife, an idealistic band of German immigrants, a regiment of New York City firemen, a community of Virginia slaves, and a young college professor who would one day become president. Their stories take us from the

corridors of the White House to the slums of Manhattan, from the waters of the Chesapeake to the deserts of Nevada, from Boston Common to Alcatraz Island, vividly evoking the Union at its moment of ultimate crisis and decision” (from amazon.com).

“Goodheart, a historian and journalist who will be writing a column on the Civil War for the *New York Times* online, makes sophisticated use of a broad spectrum of sources for an evocative reinterpretation of the Civil War's beginnings. Wanting to retrieve the war from recent critics who dismiss the importance of slavery in the Union's aims, he reframes the war as ‘not just a Southern rebellion but a nationwide revolution’ to free the country of slavery and end paralyzing attempts to compromise over it. The revolution began long before the war's first shots were fired. But it worked on the minds and hearts of average whites and blacks, slaves and free men. By 1861 it had attained an irresistible momentum.

“Goodheart shifts focus away from the power centers of Washington and Charleston to look at the actions and reactions of citizens from Boston to New York City, from Hampton Roads, Va., to St. Louis, Mo., and San Francisco, emphasizing the cultural, rather than military, clash between those wanting the country to move forward and those clinging to the old ways. War would be waged for four bitter years, with enduring seriousness, intensity, and great heroism, Goodheart emphasizes” (from *Publishers Weekly*, (c) Copyright PWxyz, LLC. All rights reserved).

continued on page 6

Central Oregon

1 Friday

10:00 a.m. Trails of Evidence: How Forensic Science Works [DVD study group] Autopsy—Cause and Manner of Death; Decomposition—From Bugs to Bones. Facilitator: Carolyn Hill (UOC)

Noon—March Newsletter Submission Deadline

1:30 p.m. Oceanography [DVD study group] Heavy Weather—Storms and Hurricanes; The Gulf Stream to Gyres—Vast Surface Currents. Facilitators: Russ Hopper and Bob Clautice (UOC)

4 Monday

10:00 a.m. Masterworks of American Art [DVD study group] The 1820s—Art in an Era of Good Feelings; Thomas Cole and the American Landscape. Facilitator: Roger Aikin (UOC)

5 Tuesday

10:00 a.m. Book Discussion Group [study group] *The Righteous Mind: Why Good People Are Divided by Politics and Religion* by Jonathan Haidt. (UOC)

Noon Round Table Luncheon at Tetherow Golf Club [discussion group] For reservations, contact Harlie Peterson, harliepete@hotmail.com, or call the OLLI-UO office at 800-824-2714.

6 Wednesday

10:00 a.m. Justice: What's the Right Thing to Do? [DVD study group] Facilitator: TBA (UOC)

12:15 p.m. News and Views [discussion group] Facilitator: Carolyn Hammond (UOC)

8 Friday

10:00 a.m. Trails of Evidence: How Forensic Science Works [DVD study group] Forensic Anthropology—Skeleton Stories; Forensics of Teeth and Bite Marks. Facilitator: Carolyn Hill (UOC)

1:30 p.m. Oceanography [DVD study group] Upwelling, Downwelling, and El Niño; The Deepest, Slowest River—Polar Bottom Water. Facilitators: Russ Hopper and Bob Clautice (UOC)

11 Monday

10:00 a.m. Masterworks of American Art [DVD study group] Thomas Cole—The Late Years; Other Views, Other Visions. Facilitator: Roger Aikin (UOC)

13 Wednesday

10:00 a.m. Justice: What's the Right Thing to Do? [DVD study group] Facilitator: TBA (UOC)

12:15 p.m. News and Views [discussion group] Facilitator: Carolyn Hammond (UOC)

14 Thursday

10:00 a.m. Oregon State Police Bend Forensic Laboratory [tour] Each tour group limited to ten participants. Preregistration required, contact Martie Steigleder, 541-728-0685, UO Center.

2:00 p.m. Oregon State Police Bend Forensic Laboratory [tour] Each tour group limited to ten participants. Preregistration required, contact Martie Steigleder, 541-728-0685, UO Center.

15 Friday

10:00 a.m. Trails of Evidence: How Forensic Science Works [DVD study group] Police Sketches and Facial Reproductions; Interview, Interrogation, Intelligence. Facilitator: Carolyn Hill (UOC)

12:15 p.m. Council Meeting President: Mike McCallister, 541-389-3430

1:30 p.m. Oceanography [DVD study group] The Ocean and Global Climate; The Warming, Rising Sea. Facilitators: Russ Hopper and Bob Clautice (UOC)

Central Oregon

18 Monday

10:00 a.m. Masterworks of American Art
[DVD study group] American Genre Painting; Native Americans and Westward Expansion. Facilitator: Roger Aikin (UOC)

19 Tuesday

10:00 a.m. Book Discussion Group
[study group] *The Righteous Mind: Why Good People Are Divided by Politics and Religion* by Jonathan Haidt. (UOC)

20 Wednesday

10:00 a.m. Justice: What's the Right Thing to Do? [DVD study group]
Facilitator: TBA (UOC)

12:15 p.m. News and Views [discussion group] Facilitator: Carolyn Hammond (UOC)

22 Friday

10:00 a.m. Trails of Evidence: How Forensic Science Works [DVD study group] Forensic Profiling—Who, How and Why? Human Memory and Eyewitness Accounts. Facilitator: Carolyn Hill (UOC)

1:30 p.m. Oceanography [DVD study group] Marine Pollution—The Impact of Toxins; The Future Ocean. Facilitators: Russ Hopper and Bob Clautice (UOC)

25 Monday

10:00 a.m. Masterworks of American Art
[DVD study group] The Civil War in Art; The Glow of Peace. Facilitator: Roger Aikin (UOC)

26 Tuesday

1:30 p.m. Program Committee Meeting
Chair: Helen Pruitt, 541-382-7827 (UOC)

27 Wednesday

10:00 a.m. Justice: What's the Right Thing to Do? [DVD study group]
Facilitator: TBA (UOC)

12:15 p.m. News and Views [discussion group] Facilitator: Carolyn Hammond (UOC)

28 Thursday

1:30 p.m. Armchair Traveler: Australia and New Zealand [lecture]
Presenter: Jim Hammond (UOC)

Locations

University of Oregon Center in Bend
80 NE Bend River Mall, Bend

Bend Senior Center
1600 SE Reed Market Rd., Bend

DesChutes Historical Museum
129 NW Idaho Ave., Bend

Key

UOC = UO Center in Bend

BSC = Bend Senior Center

DHM = DesChutes Historical Museum

TBA = To Be Announced

Parking at the UO Center

OLLI-UO members and their guests should use the shopping center parking spaces at the side of the building when attending OLLI meetings and classes. Please note that the parking lot in front of the Duck Store should be left open for the store's customers.

Questions?

Call 800-824-2714

Grid calendars available from the office or online at <http://osher.uoregon.edu>

Renewals

Mail renewals and membership applications to:

OLLI-UO Central Oregon
1277 University of Oregon
Eugene, OR 97403-1277

Or call the OLLI-UO office to renew, 800-824-2714

UO Staff Contacts:

OLLI-UO Program Director:
Ruth Heller, 800-824-2714

UO Bend Center Manager:
Martie Steigleder, 541-728-0685

OLLI Committee Contacts:

Council President:
Mike McAllister, 541-389-3430

Program Chair:
Helen Pruitt, 541-382-7827

Activities and Travel:
Gerry and Bruce Sharp,
541-526-1399

Membership Outreach Interim Chair:
Russel Hopper, 541-647-4626

Central Oregon

Learning Circle

Monthly Schedule

Monday

10:00 a.m. Masterworks of American Art: weekly.

Tuesday

10:00 a.m. Book Discussion Group.
Noon Round Table Luncheon: meets February 5 at Tetherow Golf Club.

Wednesday

10:00 a.m. "Justice": weekly.
12:15 p.m. News and Views: weekly.

Friday

10:00 a.m. Trails of Evidence: How Forensic Science Works: weekly.
1:30 p.m. Oceanography: Exploring Earth's Final Wilderness: weekly.

We welcome member proposals for study or discussion groups! Share your interests and expertise with other members or explore a new topic together. Contact the OLLI-UO office, or the Central Oregon Program Chair, if you're interested in proposing or leading a new group.

For questions, call the OLLI-UO office at 800-824-2714.

continued from page 3

Life Ascending: The Ten Great Inventions of Evolution

Beginning Friday, March 8, 1:30–3:30 p.m., UO Center

This eight-week course, led by **Jim Hammond** and **Ed Lee**, is built around the prize-winning book *Life Ascending* by Nick Lane, a biochemist and research Fellow at University College London. It covers ten great breakthroughs of evolution and the most up-to-date hypotheses as to when and how each of them came about to shape the world we inhabit: the origins of life, DNA, photosynthesis, the complex cell, sex, movement, sight, hot blood, consciousness, and death. Lane paints a colorful picture of evolutionary science as an ongoing process of exploration conducted and fought over by very human explorers. The course augments the book with videos, brief talks, discussions, hand-outs, and links to additional resources. The course and book are tailored to a general audience.

In the book, Lane describes each invention, how it works, the leading explanations and viable alternatives for how it came to be, and in some cases, his own vote for most likely explanation. He points out some of the unanswered questions. The book describes the outer limits of various evolutionary "expeditions" as of 2009. This course reviews, clarifies, updates, discusses, and expands on his material.

Welcome

Welcome to **Martie Steigleder**, UO Bend Center manager. Martie will handle class and meeting room scheduling and provide onsite assistance for various Central Oregon programs and events organized by UO Development, the Duck Athletic Fund, and UO Academic Extension (including OLLI-CO). Martie's phone number at the UO Center is 541-728-0685 and her e-mail is martie@uoregon.edu. Welcome her on your way into class.

Parking

Parking in the small lot in front of the Duck Store is reserved for their patrons. Please park in the side lot when attending OLLI-CO classes. Thank you.

Eugene/Springfield



Program Director's Note

As many of you know, the UO lifelong learning program began in Eugene in the spring of 1993. Originally known as Learning in Retirement

(LIR), the program's original purpose, to create "an intellectual home" for members, has remained constant as our membership has grown and diversified.

It is interesting to note that during the first year of operation, our program offered three book groups, play reading, one current events discussion group, monthly Armchair Traveler presentations by members, and a weekly session of a lecture course.

The monthly schedule now includes meetings of nineteen discussion, study, or interest groups, four standing committees, two ad hoc committees, and an average of eight to ten lecture sessions every month.

All this activity has made it increasingly difficult for

curriculum committee and program staff to schedule new and additional offerings proposed by our members. After discussing the situation, the Curriculum Committee and Council created a survey to sample member opinions on scheduling and their reactions to a variety of possible changes. The survey was distributed over a two-week period, and responses were collected and summarized by a committee volunteer.

Your responses indicated that members would be willing to make adjustments to the class and meeting schedules annually and/or by term, that the duration of class sessions could be modified, and that current meeting times could be adjusted to create new class periods during the day.

What are our next steps? In coming months, I'll join the Council and Curriculum Committee in meeting with group facilitators to discuss reasonable schedule variations that can be implemented in future terms.

Thanks to all who participated in the survey!

Ruth Heller, OLLI-UO Program Director

continued from page 1

public land. The result is a story hiking author Bill Sullivan calls, "a well-crafted tale." The book is among three new offerings from Welch in the fall of 2012. The others are *Resolve* and *52 Little Lessons from It's a Wonderful Life*.

The Garden as Metaphor in French Opera

Friday, February 8, 1:30–3:30 p.m. Much scholarly discussion on French grand opera has understandably focused on the monumentality of the genre: its sweeping historical panoramas, public spectacles, and a large onstage chorus analogous to the Parisian crowd in its diversity, autonomy, and even violence. Yet this emphasis on the "grandness" of grand opera has obscured the dramaturgical significance of private garden settings within French opera of the 1830s

and 40s. In this talk, **Helena Kopchick Spencer**, a PhD candidate in musicology at UO, will examine garden scenes drawn from works such as Auber's *La Muette de Portici*, Meyerbeer's *Les Huguenots*, Donizetti's *La Favorite*, and Halévy's *La Reine de Chypre* to demonstrate the frequent use of the enclosed garden as a scenic frame for clandestine encounters, solitary confessions, and homosocial intimacy.

Kopchick Spencer has presented papers at national and Pacific Northwest chapter meetings of the American Musicological Society, the International Conference on Nineteenth-Century Music, and the International Grieg Society. Since 2007 she has been an adjunct instructor at Willamette University.

Revolutionary Recipes: Foodways and African American Literature

February 13, 1:30–3:30 p.m.

Courtney Thorsson, University of Oregon assistant professor of English, will discuss a particular strand of African American literature that uses culinary discourse and the recipe form to describe race, class, and gender. This tradition reaches back to Robert Roberts' 1827 conduct manual *The House Servant's Directory* and *What Mrs. Fisher Knows about Old Southern Cooking*, which was published in 1881 and is called the first African American cookbook by many foodways scholars. A tradition of using culinary language and recipes in African American writing continues through contemporary cookbooks, poems, and novels.

Thorsson's research and teaching
continued on page 10

Eugene/Springfield

1 Friday

9:30 a.m. Curriculum Committee
Meeting Chair: Dina Wills,
541-687-4784. (AK)

11:00 a.m. Intermediate Spanish [study group] Facilitator: Bonnie Fromhold (BZ)

Noon—March Newsletter Submission Deadline

1:30 p.m. Hiking the Pacific Crest Trail [lecture] Presenter: Bob Welch (AK/MX)

4 Monday

10:00 a.m. Creative Writing [study group] Facilitator: Livvie Taylor-Young (CN)

1:30 p.m. Dynamic Duos [film series] *Woman of the Year*. Introduced by Jeff Johnson (AK/MX)

3:30 p.m. Exploring German [study group] Contact: Paul Holbo (BZ)

3:45 p.m. French Language [study group] Facilitator: Elaine deMartin Webster (CN)

5 Tuesday

9:30 a.m. Membership, Promotions and Awards Committee Meeting Chair: Betty Hosokawa, 541-683-1907 (CN)

10:30 a.m. Understanding Science [DVD study group] A special session will be held with the Philosophy Group on the subject of fundamental relationships between philosophy and science. All are welcome. Facilitator: John O'Brien (AK)

1:30 p.m. Art History Special Series [lecture series] The Garden as Art: Romantic Eighteenth Century Gardens, Victorian Perfection, and Twentieth Century. Presenter: Helene-Carole Brown (AK)

3:00 p.m. Interpretive Play Reading [study group] Facilitator: Esther Erford (CN)

6 Wednesday

10:00 a.m. International Relations [discussion group] topic TBA. Facilitator: John Attig (CN)

7 Thursday

10:00 a.m. Thinking Allowed [discussion group] Controls: Population vs. Food and Water. Facilitator: Chuck Adams (CN)

3:15 p.m. Spanish Conversation [study group] Facilitators: Nancy Richey and Stan Cook (CN)

8 Friday

9:30 a.m. Governing Council Meeting
President: Susan Rutherford,
541-343-4620 (AK)

11:00 a.m. Intermediate Spanish [study group] Facilitator: Bonnie Fromhold (BZ)

1:30 p.m. The Garden as Metaphor in French Opera [lecture] Presenter: Helena Spencer (AK/MX)

11 Monday

10:00 a.m. Philosophy Salon [study group] Philosophy and Architecture, Part one of three: What is architecture, and is it a fine art? Presenter: David Kolb. Facilitators: Byron Chell, Lorraine Ironplow, and Dennis Lawrence (CN)

1:30 p.m. Dynamic Duos [film series] *Pillow Talk*. Introduced by David Holloman (AK/MX)

3:30 p.m. Exploring German [study group] Contact: Paul Holbo (BZ)

3:45 p.m. French Language [study group] Facilitator: Elaine deMartin Webster (CN)

12 Tuesday

10:00 a.m. Historical Novels and Nonfiction [book group] *The Greater Journey: Americans in Paris* by David McCullough. Facilitator: Corinne Hunt (CN)

13 Wednesday

10:00 a.m. Short Story Discussion [study group] *The Night in Question* by Tobias Wolff; *The Ones Who Walk Away from Omelas* by Ursula K. Le Guin. Facilitator: Shiela Pardee (CN)

1:30 p.m. Revolutionary Recipes: Foodways and African American Literature [lecture] Presenter: Courtney Thorsson (AK/MX)

3:30 p.m. Alternatives [discussion group] The Environment and Global Warming. Facilitator: Jerry Brule (CN)

14 Thursday

10:00 a.m. News and Views [discussion group] Facilitator: Jack Meacham (CN)

1:30 p.m. Music Appreciation [DVD study group] 30 Greatest Orchestral Works: Holtz, The Planets; History of Jazz. Facilitator: Dennis Lawrence (CN)

3:15 p.m. Spanish Conversation [study group] Facilitators: Nancy Richey and Stan Cook (CN)

15 Friday

11:00 a.m. Intermediate Spanish [study group] Facilitator: Bonnie Fromhold (BZ)

1:30 p.m. Ecopsychology: Science, Totems, and the Technological Species [lecture] Presenter: Patricia Hasbach (AK/MX)

18 Monday

10:00 a.m. Creative Writing [study group] Facilitator: Livvie Taylor-Young (CN)

1:30 p.m. President Hayes Visits Oregon! [lecture] Presenter: Kristine Deacon (AK/MX)

3:30 p.m. Exploring German [study group] Contact: Paul Holbo (BZ)

3:45 p.m. French Language [study group] Facilitator: Elaine deMartin Webster (CN)

Eugene/Springfield

19 Tuesday

10:30 a.m. Understanding Science
[DVD study group] Rise of Humans: Great Scientific Debates: *Ramapithecus*–Ape Man; *Australopithecus afarensis*–Ancestor or Not? Facilitator: John O'Brien (AK)

1:30 p.m. Art History [DVD study group]
The Cathedral: Romanesque at Its Best; Saint-Denis and the Beginning of Gothic Style. Facilitator: Ray Staton (AK)

3:00 p.m. Interpretive Play Reading
[study group] Facilitator: Esther Erford (CN)

20 Wednesday

10:00 a.m. International Relations
[discussion group] topic TBA. Facilitator: John Attig (CN)

1:30 p.m. The Segregated Black Soldiers of WWII [lecture] Presenter: Nathan Fendrich (AK/MX)

21 Thursday

10:00 a.m. Thinking Allowed [discussion group] Can Political Contributions Become Rational? Facilitator: Chuck Adams (CN)

Noon—Poetry Writing [study group]
Facilitator: Gloria Wells (CN)

3:15 p.m. Spanish Conversation [study group] Facilitators: Nancy Richey and Stan Cook (CN)

22 Friday

11:00 a.m. Intermediate Spanish [study group] Facilitator: Bonnie Fromhold (BZ)

1:30 p.m. Ashland Preview: *Lear and the Shrew* [lecture] Presenter: Thelma Greenfield (AK/MX)

25 Monday

10:00 a.m. Activities and Travel Committee Chair: Veronika Walton, 541-344-1565 (AK)

10:00 a.m. Philosophy Salon [study group] Philosophy and Architecture, Part two of three: How to become wiser and more discerning in our experiences of architecture. Presenter: David Kolb. Facilitators: Byron Chell, Lorraine Ironplow, and Dennis Lawrence (CN)

1:30 p.m. Dynamic Duos [film series] *To Have and Have Not*. Introduced by Jack Powell (AK/MX)

3:30 p.m. Exploring German [study group] Contact: Paul Holbo (BZ)

3:45 p.m. French Language [study group] Facilitator: Elaine deMartin Webster (CN)

26 Tuesday

10:00 a.m. Historical Novels and Nonfiction [book group] *The Greater Journey: Americans in Paris* by David McCullough. Facilitator: Corinne Hunt (CN)

1:30 p.m. Classics/Philosophy [book group] *Mutual Aid* by Peter Kropotkin. Facilitator: Paul Holbo (CN)

27 Wednesday

10:00 a.m. Short Story Discussion [study group] *The Fat Man in History* by Peter Carey; *The Hunger Artist* by Franz Kafka. Facilitator: Shiela Pardee (CN)

1:30 p.m. Oregon's Darker Side: Poverty, Hunger and Income Inequality [lecture] Panel presentation (AK/MX)

3:30 p.m. Alternatives [discussion group] Election Reform. Facilitator: Jerry Brule (CN)

28 Thursday

10:00 a.m. News and Views [discussion group] Facilitator: Jack Meacham (CN)

1:30 p.m. Music Appreciation [DVD study group] 30 Greatest Orchestral Works: Rachmaninoff, Symphony No. 2; History of Jazz. Facilitator: Dennis Lawrence (CN)

3:15 p.m. Spanish Conversation [study group] Facilitators: Nancy Richey and Stan Cook (CN)

Locations

All meetings held at Baker Downtown Center, 975 High Street, unless otherwise stated.

Key

AK = Alaska Room
MX = Mexico Room
CN = Canada Room
BZ = Belize Room
TBA = To Be Announced

Renewals

Mail renewals and membership applications to:

OLLI-UO Eugene Springfield
1277 University of Oregon
Eugene, OR 97403-1277

Or drop them off at the office:
975 High Street, Eugene

Questions?

Call 541-346-0697

Grid calendars available in the office or online at <http://osher.uoregon.edu>

OLLI Staff Contacts:

Eugene/Springfield Staff:

OLLI-UO Program Director:
Ruth Heller, 541-346-0697

OLLI Committee Contacts:

Council President:
Susan Rutherford, 541-343-4620

Curriculum Chair:
Dina Wills, 541-687-4784

Activities and Travel:
Veronika Walton, 541-344-1565

Membership, Promotions and Awards:
Betty Hosokawa, 541-683-1907 and
Hermína Fink, 541-683-2209

Eugene/Springfield

continued from page 7

includes African American Literature, nineteenth and twentieth-century American literature, and food studies. She received her PhD and MA in English from Columbia University. Her forthcoming book is *Women's Work: Nationalism and Contemporary African American Women's Novels*.

Ecopyschology: Science, Totems, and the Technological Species

Friday, February 15, 1:30–3:30 p.m.

“We need nature for our physical and psychological well-being. Our actions reflect this when we turn to beloved pets for companionship, vacation in spots of natural splendor, or spend time working in the garden. Yet we are also a technological species and have been since we fashioned tools out of stone. Thus one of the century’s central challenges is to embrace our kinship with a more-than-human world—our ‘totemic self’—and integrate that kinship with our scientific culture and technological selves” (<http://amzn.to/10K3TLD>).

Dr. Patricia Hasbach, director of Northwest Ecotherapy in Eugene, has just published a book on this relevant subject with Peter H. Kahn, Jr. Jack Turner, author of *The Abstract Wild*, calls it, “the benchmark from which all subsequent elaborations of the discipline will proceed.”

President Hayes Visits Oregon!

Monday, February 18, 1:30–3:30 p.m.

In 1880, Rutherford B. Hayes, the nineteenth president of the U.S., took a wild and woolly, adventure-packed trip through Oregon accompanied by first lady “Lemonade Lucy” Hayes and Civil War hero General William T. Sherman.

In Eugene, Hayes complimented the city on its new university and teased Oregonians about having webfeet. From his Portland hotel, he watched Portland’s rabbi shoot two people in a street gunfight, and in Forest Grove, Hayes gave the most significant speech of his presidency about Indian rights. During the trip, he celebrated his birthday with a rock-throwing contest on the Columbia River—all of his exploits were reported each day on the front page of the nation’s newspapers.

Comparing Hayes’ trip to recent presidential visits illustrates a complete metamorphosis of the office of the presidency—from how presidents interact with the public, to how presidents are protected, and how presidential travel is paid for.

Kristine Deacon, a graduate of the University of Oregon School of Journalism, has worked for *The Bend Bulletin*, *Anchorage Daily News*, and *The Sacramento Bee*, and has been a public affairs specialist with the Oregon Department of Parks and Recreation.

The Segregated Black Soldiers of World War II

Wednesday, February 20,

1:30–3:30 p.m.

During the Second World War, one million African Americans put on the uniforms of their country. **Nathan Fendrich** will offer a multimedia presentation about two highly decorated segregated Army units in honor of National Black History Month.

The 761st Tank Battalion, infantry, and engineer support teams trained for nearly two years, but were not assigned because most commanders felt that the African American soldiers were not capable of handling

tanks in combat situations. Because of our heavy losses in Normandy, especially in tanks, General George Patton decided to take the 761st Tank Battalion into his third army.

The men adopted a rather colorful name for their battalion, “The Black Panthers”—yes that’s where the name originated—then set out to make their mark. In 183 days of combat, the 761st inflicted such high losses on the Germans that Adolf Hitler personally put out a kill order on the unit.

Fendrich will also share the story of the “Red Ball Express,” the Army Transportation Corps’ massive eighty-two day trucking operation to bring supplies to frontline troops. A remarkable 75 percent of all Red Ball Express drivers were African Americans.

Ashland Preview: Lear and the Shrew

Friday, February 22, 1:30–3:30 p.m.

UO Professor Emerita **Thelma**

Greenfield discusses two of this

year’s Ashland plays, *King Lear*, written at the height of Shakespeare’s tragic powers, and one of his earlier comedies, *The Taming of the Shrew*. With astounding insight, *Lear* penetrates to the heart of human cruelty and human goodness as the powerful old king is suddenly stripped of status, authority, fatherhood, and respect, and ultimately, of such protections as a roof over his head and his very sanity. Nature and society seem combined to destroy him, yet the aged king fights heroically to redefine himself and find new strengths and new understandings. In *The Taming of the Shrew*, the character of Kate gives us an early and extreme version of Shakespeare’s feisty comic heroine.

Eugene/Springfield

Kate abruptly finds a worthy opponent in the outrageous Petruccio; their battle is well worth a ring-side seat. Meantime, keep an eye on meek Bianca, Kate's gentle younger sister—she may fool you in the end.

Registration is now open for the Oregon Shakespeare Festival Spring Trip, March 6–7. Call Experience Oregon at 541-342-2662 to register.

Oregon's Darker Side: Poverty, Hunger, and Income Inequality

Wednesday, February 27,
1:30–3:30 p.m.

Oregon is a beautiful state and a fairly progressive one. However, there is a darker underside which is under-understood, under-noticed, and under-discussed. Data from the Oregon Center for Public Policy indicates that almost 30 percent of Oregon's children don't get enough food. Food banks struggle to keep up with the thousands of new families seeking food boxes. More families apply for supplements such as food stamps, Temporary Assistance for Needy Families (TANF), and the Earned Income Tax Credit (EITC) for the working poor.

The Oregon Center for Public Policy (OCP), located in Silverton and founded in 1995, has concentrated a segment of its policy research in these areas.

A panel from the OCP will visit OLLI to present its data on these critical issues and engage us in an interactive discussion.

Philosophy Salon Special Series: Philosophy and Architecture

Mondays, February 11, 25, and
March 11, 10:00 a.m.–noon

Buildings are all around us but mostly they remain in the background for our

activities. What can we learn if we concentrate on them and on issues about the nature of architecture and the criteria for judging and appreciating buildings? At the Philosophy Salon this winter, **David Kolb** will lead three sessions on the philosophy of architecture. Everyone is welcome to attend.

- Session One: What is architecture trying to do? How does architecture relate to the fine arts? Is everything we build “architecture”?
- Session Two: How to become wiser and more discerning in our experiences of architecture.
- Session Three: Old and new challenges facing architects in today's multiple and changing world.

The Rise of Humans: Great Scientific Debates

On Tuesday, February 19, the Understanding Science Study Group will begin a new Teaching Company DVD lecture course on the study of ancient humans. This twenty-four lecture series (twelve meetings) skillfully introduces us to an understanding of the subject of paleoanthropology.

“In recent decades, the field of paleoanthropology has exploded, bringing us closer than ever before to making sense of this debated subject and providing us with a richer knowledge of our origins” (<http://bit.ly/n3H5sI>).

The Understanding Science Group meets the first, third, and fifth Tuesdays of the month at 10:30 a.m. All members and guests are welcome. Please call facilitator John O'Brien if you have questions, 541-461-9100.

Learning Circle

Monthly Schedule

Monday

10:00 a.m. Creative Writing: first and third weeks
Philosophy Salon: second and fourth weeks
3:30 p.m. Exploring German: weekly
3:45 p.m. French Language: weekly

Tuesday

10:00 a.m. Historical Novels and Nonfiction: second and fourth weeks
10:30 a.m. Understanding Science: first, third, and fifth weeks
1:30 p.m. Art History: first and third weeks
Classics/Philosophy: fourth week
3:00 p.m. Interpretive Play Reading: first and third weeks

Wednesday

10:00 a.m. International Relations: first and third weeks
Short Story Discussions: second and fourth weeks
3:30 p.m. Alternatives: second and fourth weeks

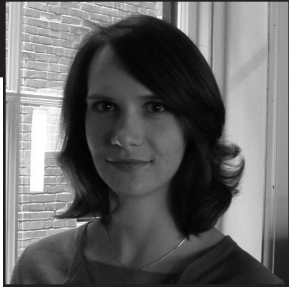
Thursday

10:00 a.m. Thinking Allowed: first and third weeks
News and Views: second and fourth weeks
Fifth Thursdays: fifth week
Noon Poetry Writing: third week
1:30 p.m. Music Appreciation: second and fourth weeks
3:15 p.m. Spanish Conversation: weekly

Friday

11:00 a.m. Intermediate Spanish: weekly

Portland



Program Coordinator's Note: Portland

It is with a heavy heart that I write to you about the closure of the Portland branch of the OLLI-UO program.

The OLLI-UO in Portland site will close in June 2013, at the end of the current academic year. This difficult decision was not made lightly, nor is it a reflection of the membership. Some of our most dedicated OLLI-UO members are part of the Portland program, and it is this sense of loyalty and commitment that has made OLLI-UO in Portland such an amazing community.

Programming will continue normally through winter term. Beginning in April, we will gradually reduce the number of programs offered; the Tuesday and Wednesday morning DVD study groups will continue, and one or two lectures and field trips will be coordinated. Member-led discussion groups may continue through May.

The decision to close was made recently, and we understand you might have questions. We will do our best to address your concerns. You should already have received an official letter outlining details of the closure, as well as your fee and membership options through spring. Please let us know if you have not received a copy.

OLLI has been an important part of our lives. In the coming months, we will compile a list of active lifelong learning groups in the Portland-metro area and make it available to you. Learning and staying engaged is, after all, what's important.

Adrianna Mahoney, Program Coordinator

continued from page 1

POLST: Physician Orders for Life-Sustaining Treatment Paradigm—An Overview

Tuesday, February 5, 1:00–2:30 p.m. In 1991, the POLST Paradigm Initiative began in Oregon to ensure that patient wishes for life-sustaining treatments be honored. Despite the availability of advance directives, medical ethics leaders recognized a disparity between patient wishes and treatment. The Center for Ethics in Health Care at Oregon Health & Sciences University “convened representatives from stakeholder health care organizations” to create this portable medical order developed around the patient’s values for life-sustaining treatments.

Learn more about the POLST Paradigm Program, who it benefits, and how it differs from advance

directive forms at this presentation with **Margaret Murphy Carley**, associate director of the OHSU Center for Ethics in Health Care and executive director of the National POLST Paradigm Task Force.

Please register for this presentation by Monday, February 4. Call the OLLI-UO office at 503-412-3653.

End of Life Planning for Legal and Financial Matters

Tuesday, February 12, 1:00–2:30 p.m. Attorney **Mark M. Williams** will speak on *End of Life Planning for Legal and Financial Matters*. Mr. Williams focuses his practice in estate planning, probate, elder law (medical and financial issues facing the aging and incapacitated), and legal ethics. He is past chair of the Oregon State Bar Elder Law Section, a member and past president of the Oregon Law Institute

board since 1995, and adjunct professor at the University of Oregon School of Law. He will discuss topics such as advance directives for medical care, trusts, inheritance law, and how to leave your personal and financial affairs in order and easily accessible.

Please register for this presentation by Wednesday, February 6. Call the OLLI-UO office at 503-412-3653.

Grief and Bereavement: Coping with Loss

Tuesday, February 19, 1:00–2:30 p.m. Death is unknown, beyond our control, and perhaps lonely. Licensed professional counselor **Justin Rock** will talk to OLLI-UO in Portland about grief and loss from a therapist’s approach and open a discussion about how grief can be experienced. Additionally, practical questions, such as *When should a person begin grief*

Portland

counseling? and *What does it entail?* will be addressed.

Justin Rock has an MA degree from Lewis & Clark College in counseling psychology. His areas of focus include death, anxiety, and grief and bereavement.

Please register for this presentation by Friday, February 15. Call the OLLI-UO office at 503-412-3653.

How to Die in Oregon

Tuesday, February 26, 1:00–3:30 p.m.
We will end this series with the award-winning documentary film, *How to Die in Oregon*. About the film:

“In 1994, Oregon became the first state to legalize physician-assisted suicide. As a result, any individual whom two physicians diagnose as having less than six months to live can lawfully request a fatal dose of barbiturate to end his or her life. Since 1994, more than 500 Oregonians have taken their mortality into their own hands. In *How to Die in Oregon*, filmmaker Peter Richardson gently enters the lives of the terminally ill as they consider whether—and when—to end their lives by lethal overdose. Richardson examines both sides of this complex, emotionally charged issue. What emerges is a life-affirming, staggeringly powerful portrait of what it means to die with dignity” (<http://www.howtodieinoregon.com/about-the-movie.html>).

History of American Landscape Painting

Wednesday, February 13,
1:00–3:00 p.m.

Our national parks and landscape painters have a long and entwined history and continue to connect

people, parks, and sense of place. Artist **Joan Hoffmann** will discuss the history of American landscape painting and show images of her own oils and watercolors of mountains in the American West. Join the discussion of our rich and exciting art history, including Oregon’s Artist, Eliza Barbus, recognized by the State Legislature in the 1960s. She painted the iconic landscapes of Mt. Hood, Yellowstone, Muir Glacier, and more. She, Alfred Bierstadt, and other painters explored and documented the West.

Hoffmann paints landscapes of the American West. Her oil and watercolor impressions evoke a poetic sense of place. She teaches, paints, and works to preserve the wild places that she explores. She lectures on American landscape painters, national parks, and public lands. Galleries representing her work include: Portico Gallery in Santa Barbara, The White Hart Gallery, Steamboat Springs, CO, Cow Canyon Trading Post, Bluff, UT, and Burlington City Arts, Burlington, VT.

Blossoms and Brushstrokes:

A Painting Workshop

Thursday, February 14,
9:00 a.m.–noon

Join fellow painters (or those who want to begin!) and learn how to refine your brushstrokes. Artist **Joan Hoffmann** will demonstrate a variety of techniques. This class incorporates Eastern Sumi brush techniques and Western classical brush styles.

Beginners or experienced painters will enjoy making quick studies and one longer finished painting. Bring the medium you like: watercolors, acrylics,

oils, or mixable (waterbase) oils. Work with your own paints and brushes or work from the optional supply list (provided upon request). Celebrate spring and meet new painters!

The cost for this three-hour workshop is \$40.00. Reserve your space today and register by calling the OLLI-UO office at 800-824-2714.

Docent-led Tour of the Evergreen Aviation and Space Museum

Monday, February 25,
11:00 a.m.–3:30 p.m.

Join OLLI-UO for a day at the Evergreen Aviation and Space Museum where we’ll enjoy two docent-led tours of the museum. Tours, which are usually led by veteran pilots, will provide unique insight into the field of aviation. Members will have the opportunity to see “displays ranging from the elegant aeronautic designs of two unknown bike mechanics—Orville and Wilbur Wright—to an actual Lockheed SR-71 Blackbird that can fly at speeds of over 2,000 miles per hour. The centerpiece of these aeronautic breakthroughs is the original *Spruce Goose*. Built entirely of wood due to wartime restrictions on metals, this massive airplane stands as a symbol of American industry during World War II” (<http://www.evergreenmuseum.org/the-museum/aircraft-exhibits/>).

Between tours, we’ll have time to enjoy lunch at one of two onsite cafés: The Aviation Museum Liberty Belle Café and Space Museum Cosmo Café.

Registration is required by Wednesday, February 20. Call the OLLI-UO office at 800-824-2714 to reserve your space. Cost: \$19.00,

continued on page 16

Portland

5 Tuesday

10:30 a.m. Understanding the World's Greatest Structures: Science and Innovation from Antiquity to Modernity [DVD study group]
Trusses—The Power of the Triangle; Cables and Arches—The Power of the Parabola (150)

1:00 p.m. POLST: Physician Orders for Life-Sustaining Treatment Paradigm—An Overview [presentation] Presenter: Margaret Murphy Carley, associate director of the OHSU Center for Ethics in Health Care and executive director of the National POLST Paradigm Task Force. RSVP by Monday, February 4. (152)

6 Wednesday

10:30 a.m. Great American Bestsellers: The Books That Shaped America [DVD study group] *The Jungle*; *Main Street*. Facilitators: Fred and Betty Brace (150)

1:00 p.m. From Page to Stage [study group] Selection: *My Children! My Africa!* by Athol Fugard. Copies of the play are available in the OLLI-UO office. Facilitator: Susan Green (AE Classroom)

7 Thursday

10:00 a.m. Chinese Culture [short course] Presenter: OLLI-UO Member Phil Silverman. Location: Elsie Stuhr Center of the Tualatin Hills Park & Recreation District 5550 SW Hall Blvd., Beaverton. The registration deadline for this class has passed. For questions, contact the OLLI-UO office at 503-412-3653.

1:00 p.m. Further Explorations [discussion group] Topic: What responsibilities do we have to younger generations? Facilitator: Joe Leben (AE Classroom)

12 Tuesday

10:30 a.m. Understanding the World's Greatest Structures: Science and Innovation from Antiquity to Modernity [DVD study group]
Loads and Structural Systems; Egypt and Greece—Pyramids to the Parthenon (150)

1:00 p.m. End of Life Planning for Legal and Financial Matters [presentation] Presenter: Elder Law Attorney Mark Williams. RSVP for this presentation by Wednesday, February 6. Call the OLLI-UO office at 503-412-3653. (152)

13 Wednesday

10:30 a.m. Great American Bestsellers: The Books That Shaped America [DVD study group] *The Maltese Falcon*; *The Good Earth*. Facilitators: Fred and Betty Brace (150)

1:00 p.m. History of American Landscape Painting [presentation] Presenter: Artist Joan Hoffmann (150)

14 Thursday

9:00 a.m. Blossoms and Brushstrokes: A Painting Workshop
Instructor: Artist Joan Hoffmann. Cost: \$40.00. Registration is required. To register, call the OLLI-UO office at 800-824-2714. Bring the medium you like: watercolors, acrylics, oils or mixable (waterbase) oils. Work with your own paints and brushes or work from the optional supply list (provided upon request). (AE Classroom)

10:00 a.m. Chinese Culture [short course] Presenter: OLLI-UO Member Phil Silverman. Location: Elsie Stuhr Center of the Tualatin Hills Park & Recreation District 5550 SW Hall Blvd., Beaverton. The registration deadline for this class has passed. For questions, contact the OLLI-UO office at 503-412-3653.

19 Tuesday

10:30 a.m. Understanding the World's Greatest Structures: Science and Innovation from Antiquity to Modernity [DVD study group]
The Glory of Rome in Arches and Vaults; The Rise and Fall of the Gothic Cathedral (150)

1:00 p.m. Grief and Bereavement: Dealing with Loss [presentation] Presenter: Justin Rock, LPC. RSVP for this presentation by Friday, February 15. Call the OLLI-UO office at 503-412-3653. (152)

20 Wednesday

10:30 a.m. Great American Bestsellers: The Books That Shaped America [DVD study group] *Gone with the Wind*; *How to Win Friends and Influence People*. Facilitators: Fred and Betty Brace (150)

21 Thursday

10:00 a.m. Chinese Culture [short course] Presenter: OLLI-UO Member Phil Silverman. Location: Elsie Stuhr Center of the Tualatin Hills Park & Recreation District 5550 SW Hall Blvd., Beaverton. The registration deadline for this class has passed. For questions, contact the OLLI-UO office at 503-412-3653.

1:00 p.m. Further Explorations [discussion group] Topic: Shedding Your Skin: How has your identity changed with age? Facilitator: TBD (AE Classroom)

Portland

25 Monday

11:00 a.m. Docent-led Tour of the Evergreen Aviation and Space Museum [tour] Meet at the museum: 500 NE Captain Michael King Smith Way, McMinnville, OR 97128. Registration is required by Wednesday, February 20. Call the OLLI-VO office at 800-824-2714 to reserve your space. Cost: \$19.00, lunch not included.

26 Tuesday

10:30 a.m. Understanding the World's Greatest Structures: Science and Innovation from Antiquity to Modernity [DVD study group] Three Great Domes—Rome to the Renaissance; How Iron and Science Transformed Arch Bridges (150)

1:00 p.m. *How to Die in Oregon* [film] Facilitator: TBD. (150)

27 Wednesday

10:30 a.m. Great American Bestsellers: The Books That Shaped America [DVD study group] *The Grapes of Wrath*; *Native Son*. Facilitators: Fred and Betty Brace (150)

28 Thursday

10:00 a.m. Chinese Culture [short course] Presenter: OLLI-VO Member Phil Silverman. Location: Elsie Stuhr Center of the Tualatin Hills Park & Recreation District 5550 SW Hall Blvd.; Beaverton. The registration deadline for this class has passed. For questions, contact the OLLI-VO office at 503-412-3653.

Location

VO in Portland White Stag Block
70 NW Couch Street, Portland

Unless otherwise specified, all programs are:

- 1) Held at the White Stag Block.
- 2) Open only to OLLI-VO members.

Key

105=WSB, Room 105
150 = WSB, Room 150
152 = WSB, Room 152
AE Classroom=WSB Office Suite
TBA = To Be Announced

Series Information

Some program series and short courses may continue in the coming months. Information on those upcoming topics should be available from the OLLI-VO office and/or the course leader. Schedule information provided in the next newsletter.

Questions?

Call 503-412-3653

Grid calendars available in the office or online at <http://osher.uoregon.edu>

OLLI Staff Contacts:

OLLI-VO Program Director:
Ruth Heller, 800-824-2714

OLLI-VO Program Coordinator:
Adrianna Mahoney, 503-412-3653

Academic Extension Program Specialist:
Nikki Klutho, 503-412-3653

Parking and Transportation Tips

Finding parking can often seem like a challenge for OLLI members attending events at the Portland White Stag Block. To make that task a little easier, we would like to share the following information:

On-Street Parking

There are over 7,000 on-street parking spaces in the downtown area. The White Stag Block is surrounded by ninety-minute parking meters; however there are five-hour meters just blocks away, near NW 3rd and Flanders. The parking meter rate is \$1.60 per hour. Parking meters operate 8:00 a.m. to 7:00 p.m., Monday through Saturday, and 1:00 to 7:00 p.m. on Sundays.

Garage Parking

Another option is to park in the Smart Park Garage at NW Naito and NW Davis, just one block north of the White Stag Block. Smart Park Garages offer affordable parking at \$1.60 per hour.

Public Transportation

Both the Red and Blue Tri-Met Max lines run right past the White Stag Block with a convenient stop at Old Town/China Town just one block north. Honored citizens (those 65+) can purchase a two-hour ticket for just one dollar.

Safety First

A security guard is available upon request to escort you to the MAX or your vehicle. For more information on this service, please call 503-412-3653.



UNIVERSITY OF OREGON

ACADEMIC EXTENSION

Osher Lifelong Learning Institute
1277 University of Oregon
Eugene, OR 97403-1277

Learning Circle

Monthly Schedule

Tuesday

10:30 a.m. Understanding the
World's Greatest Structures:
Science and Innovation from
Antiquity to Modernity: weekly

Wednesday

10:30 a.m. Great American Best-
sellers: The Books That Shaped
America: weekly

Thursday

1:00 p.m. Further Explorations:
first and third weeks
For questions, call the OLLI-UO
office at 503-412-3653 or
800-824-2714.

Let It Snow, Let It Snow

The University of Oregon rarely
closes for inclement weather.
Should you hear on the radio or
television that local public schools
have cancelled classes, it is
possible that a group leader, course
manager, or presenter may also
need to cancel their event. Please
call the OLLI office, 503-412-
3653, for the most up-to-date OLLI
event information.

As always, please use your best
judgment as to whether you feel
the roads are safe for your travel.

**Osher Lifelong Learning Institute
at the University of Oregon**
Active Minds for Active Lives
<http://osher.uoregon.edu>

Portland: continued from page 13

lunch not included. We'll meet at the
museum: 500 NE Captain Michael
King Smith Way, McMinnville, OR
97128.

New Discussion Group—Further Explorations

Thursdays, February 7 and 21,
1:00–2:30 p.m.

Tackle meaningful questions in the
new discussion group, Further Explorations, where members will have the opportunity to discuss in-depth pre-selected topics. Bring in supporting articles to fuel your ideas about the week's proposed question or come to listen to the discussion. All members are welcome. This group will operate

with a rotating facilitator, chosen
by the group for each meeting. **Joe
Leben** will facilitate the first discus-
sion on Thursday, February 7.

February and March topics cho-
sen in the January planning meeting:

- February 7: What responsibilities do we have to younger generations?
- February 21: Shedding your skin: How has your identity changed with age?
- March 7: What is consciousness? Human consciousness, animal consciousness and Artificial Intelligence
- March 21: Who's in charge? Do we have free will?